

## Product datasheet for **TA392846M**

### MRPL39 Rabbit Polyclonal Antibody

#### Product data:

Product Type:	Primary Antibodies
Applications:	WB
Recommended Dilution:	WB: 1:1000~1:2000
Reactivity:	Human, Mouse, Rat
Host:	Rabbit
Isotype:	IgG
Clonality:	Polyclonal
Immunogen:	Synthetic peptide, corresponding to amino acids 296-356 of Human MRphospho-L39.
Specificity:	MRphospho-L39 (E326) polyclonal antibody detects endogenous levels of MRphospho-L39 protein.
Formulation:	Rabbit IgG, 1mg/ml in PBS with 0.02% sodium azide, 50% glycerol, pH7.2
Concentration:	1mg/ml
Conjugation:	Unconjugated
Storage:	Store at 4°C short term. Aliquot and store at -20°C long term. Avoid freeze-thaw cycles.
Stability:	1 year
Predicted Protein Size:	~ 38 kDa
Gene Name:	mitochondrial ribosomal protein L39
Database Link:	<a href="#">Entrez Gene 54148 Human Q9NYK5</a>

[View online »](#)

**Background:**

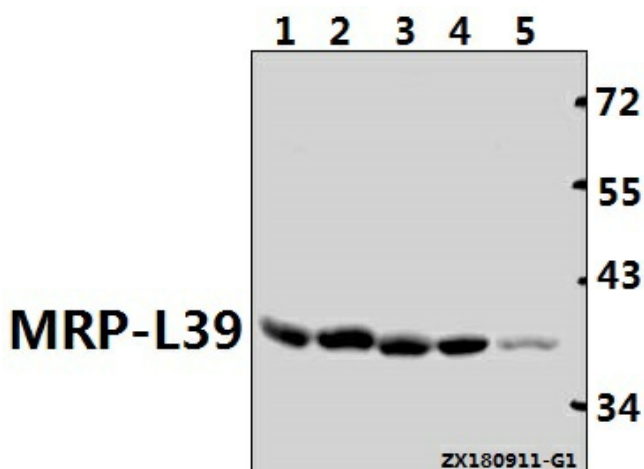
Mitochondrial ribosomes consist of a large 39S subunit and a small 28S subunit, both of which are comprised of multiple mitochondrial ribosomal proteins (MRPs) that are encoded by nuclear genes and are essential for protein synthesis within mitochondria. MRphospho-L39 (mitochondrial ribosomal protein L39), also known as MRphospho-L5, L39mt or L5mt, is a 338 amino acid mitochondrial protein that exists as a component of the 39S ribosomal subunit and works in conjunction with other MRPs to mediate protein synthesis. MRphospho-L39 exists as two isoforms produced by alternative splicing. Isoform one of MRphospho-L39 is ubiquitously expressed while isoform two is specifically expressed in heart. The gene encoding MRphospho-L39 maps to chromosome 21, which makes up about 1.5% of the human genome. Chromosome 21 contains nearly 300 genes and 47 million base pairs. Down syndrome, also known as trisomy 21, is the disease most commonly associated with chromosome 21. Alzheimer's disease, Jervell and Lange-Nielsen syndrome and amyotrophic lateral sclerosis are also associated with chromosome 21.

**Synonyms:**

39S ribosomal protein L5, mitochondrial; 39S ribosomal protein L39, mitochondrial; C21orf92; L5mt; L39mt; Mitochondrial large ribosomal subunit protein mL39; MRphospho-L5; MRphospho-L39; MRPL5; MRPL39; MSTP003; PRED22; RPML5

**Note:**

For research use only, not for use in diagnostic procedure.

**Product images:**


Western blot (WB) analysis of MRphospho-L39 (E326) polyclonal antibody at 1:1000 dilution  
 Lane1:PC12 whole cell lysate(40ug) Lane2:CT26 whole cell lysate(40ug) Lane3:HCT116 whole cell lysate(40ug) Lane4:Hela whole cell lysate(20ug) Lane5:A375 whole cell lysate(40ug)