

## Product datasheet for **TA392845S**

### LRP11 Rabbit Polyclonal Antibody

#### Product data:

Product Type:	Primary Antibodies
Applications:	WB
Recommended Dilution:	WB: 1:500~1:1000
Reactivity:	Human
Host:	Rabbit
Isotype:	IgG
Clonality:	Polyclonal
Immunogen:	Synthetic peptide, corresponding to amino acids 106-166 of Human CHP2.
Specificity:	LRP11 pAb detects endogenous levels of LRP11 protein.
Formulation:	Rabbit IgG, 1mg/ml in PBS with 0.02% sodium azide, 50% glycerol, pH7.2
Concentration:	1mg/ml
Conjugation:	Unconjugated
Storage:	Store at 4°C short term. Aliquot and store at -20°C long term. Avoid freeze-thaw cycles.
Stability:	1 year
Predicted Protein Size:	~ 53 kDa
Gene Name:	LDL receptor related protein 11
Database Link:	<a href="#">Entrez Gene 84918 Human Q86VZ4</a>



[View online »](#)

**Background:**

Members of the LDL receptor gene family, including LDLR (low density lipoprotein receptor), LRP1 (low density lipoprotein related protein), Megalin (also designated GP330), VLDLR (very low density lipoprotein receptor) and ApoER2 are characterized by a cluster of cysteine-rich class A repeats, epidermal growth factor (EGF)-like repeats, YWTD repeats and an O-linked sugar domain. LRP11 (low density lipoprotein receptor-related protein 11), also known as MANSC3, is a 500 amino acid single-pass type I membrane protein that exists as 2 alternatively spliced isoforms. LRP11 is encoded by a gene located on human chromosome 6q25.1. Chromosome 6 contains 170 million base pairs and comprises nearly 6% of the human genome. Deletion of a portion of the q arm of chromosome 6 is associated with early onset intestinal cancer, suggesting the presence of a cancer susceptibility locus. Additionally, Porphyria cutanea tarda, Parkinson's disease, Stickler syndrome and a susceptibility to bipolar disorder are all associated with genes that map to chromosome 6.

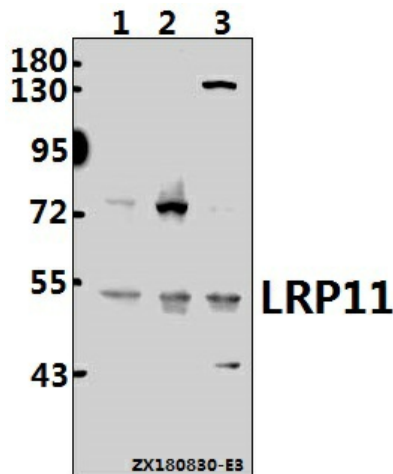
**Synonyms:**

Calcineurin B homologous protein 2; CHP2; HCA520; Hepatocellular carcinoma-associated antigen 520

**Note:**

For research use only, not for use in diagnostic procedure.

**Product images:**



Western blot (WB) analysis of NECL-4 (G376) Antibody at 1:500 dilution Lane1:PC3 whole cell lysate(40ug) Lane2:HEK293T whole cell lysate(30ug) Lane3:A549 whole cell lysate(40ug)