

Product datasheet for **TA392844S**

SAR1B Rabbit Polyclonal Antibody

Product data:

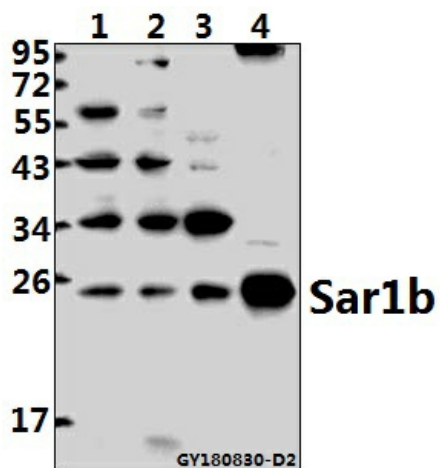
Product Type:	Primary Antibodies
Applications:	WB
Recommended Dilution:	WB: 1:500~1:1000
Reactivity:	Human, Mouse, Rat
Host:	Rabbit
Isotype:	IgG
Clonality:	Polyclonal
Immunogen:	Synthetic peptide, corresponding to amino acids 121-181 of Human Sar1b.
Specificity:	Sar1b (F151) pAb detects endogenous levels of Sar1b protein.
Formulation:	Rabbit IgG, 1mg/ml in PBS with 0.02% sodium azide, 50% glycerol, pH7.2
Concentration:	1mg/ml
Conjugation:	Unconjugated
Storage:	Store at 4°C short term. Aliquot and store at -20°C long term. Avoid freeze-thaw cycles.
Stability:	1 year
Predicted Protein Size:	~ 22 kDa
Gene Name:	secretion associated Ras related GTPase 1B
Database Link:	Entrez Gene 51128 Human Q9Y6B6
Background:	There are a number of components involved in the secretory pathway of cells. Vesicular traffic within the early secretory pathway is mediated by COPI- and COPII-coated vesicles. The COPII vesicle coat protein promotes the formation of endoplasmic reticulum (ER) derived transport vesicles that carry secretory proteins to the Golgi complex. The SAR1 gene encodes two isoforms, Sar1a and Sar1B, in mammalian cells. These proteins are low-molecular-weight GTPases, which are essential for the formation of transport vesicles from the ER. Mutations in the SAR1 gene result in Anderson's disease (and/or chylomicron retention disease CMRD), a rare, autosomal recessive lipid malabsorption disorder characterized by chronic diarrhea, failure to thrive and hypocholesterolemia in childhood.
Synonyms:	GTPBP; GTP-binding protein B; GTP-binding protein SAR1b; SAR1B; SARA2; SARB



[View online »](#)

Note: For research use only, not for use in diagnostic procedure.

Product images:



Western blot (WB) analysis of Sar1b (F151) pAb at 1:500 dilution Lane1:L02 whole cell lysate(40ug) Lane2:HCT116 whole cell lysate(40ug) Lane3:The Brain tissue lysate of Mouse(40ug) Lane4:The Muscle tissue lysate of Rat(40ug)