

## Product datasheet for **TA392843M**

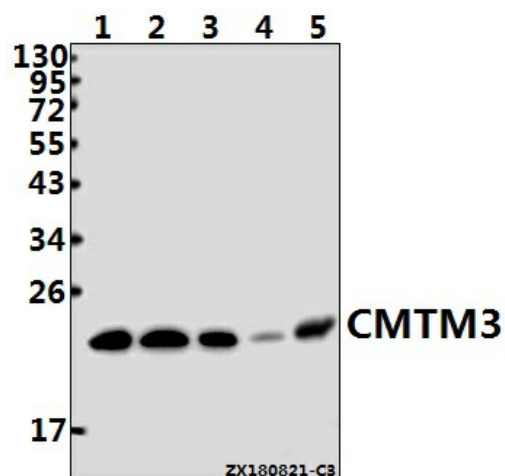
### CMTM3 Rabbit Polyclonal Antibody

#### Product data:

Product Type:	Primary Antibodies
Applications:	WB
Recommended Dilution:	WB: 1:1000~1:2000
Reactivity:	Human, Mouse, Rat
Host:	Rabbit
Isotype:	IgG
Clonality:	Polyclonal
Immunogen:	Synthetic peptide, corresponding to amino acids 67-127 of Human Atg4b.
Specificity:	CMTM3(E13) pAb detects endogenous levels of CMTM3 protein.
Formulation:	Rabbit IgG, 1mg/ml in PBS with 0.02% sodium azide, 50% glycerol, pH7.2
Concentration:	1mg/ml
Conjugation:	Unconjugated
Storage:	Store at 4°C short term. Aliquot and store at -20°C long term. Avoid freeze-thaw cycles.
Stability:	1 year
Predicted Protein Size:	~ 20 kDa
Gene Name:	CKLF like MARVEL transmembrane domain containing 3
Database Link:	<a href="#">Entrez Gene 123920 Human Q96MX0</a>
Background:	CMTM3 belongs to the chemokine-like factor gene superfamily, a novel family that is similar to the chemokine and the transmembrane 4 superfamilies of signaling molecules. This gene is one of several chemokine-like factor genes located in a cluster on chromosome 16.
Synonyms:	APG4B; ATG4B; AUT-like 1 cysteine endopeptidase; AUTL1; Autophagin-1; Autophagy-related cysteine endopeptidase 1; Autophagy-related protein 4 homolog B; Cysteine protease ATG4B; hAPG4B; KIAA0943
Note:	For research use only, not for use in diagnostic procedure.


[View online »](#)

Product images:



Western blot (WB) analysis of CMTM3 (E13) pAb at 1:500 dilution Lane1:K562 whole cell lysate(40ug) Lane2:A375 whole cell lysate(40ug) Lane3:HeLa whole cell lysate(40ug) Lane4:The Embryo tissue lysate of Mouse(40ug) Lane5:The Testis tissue lysate of Rat(40ug)