

## Product datasheet for TA392841M

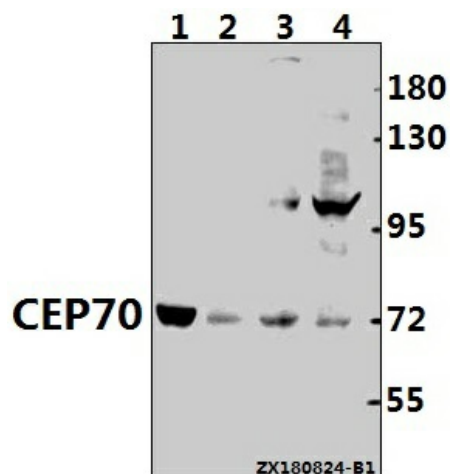
### CEP70 Rabbit Polyclonal Antibody

#### Product data:

Product Type:	Primary Antibodies
Applications:	WB
Recommended Dilution:	WB: 1:500~1:1000
Reactivity:	Human, Mouse, Rat
Host:	Rabbit
Isotype:	IgG
Clonality:	Polyclonal
Immunogen:	Synthetic peptide, corresponding to amino acids 23-83 of Human CARKL.
Specificity:	CEP70 pAb detects endogenous levels of CEP70 protein.
Formulation:	Rabbit IgG, 1mg/ml in PBS with 0.02% sodium azide, 50% glycerol, pH7.2
Concentration:	1mg/ml
Conjugation:	Unconjugated
Storage:	Store at 4°C short term. Aliquot and store at -20°C long term. Avoid freeze-thaw cycles.
Stability:	1 year
Predicted Protein Size:	~ 70 kDa
Gene Name:	centrosomal protein 70
Database Link:	<a href="#">Entrez Gene 80321 Human Q8NHQ1</a>
Background:	Centrosomal protein of 70 kDa, plays a role in the organization of both preexisting and nascent microtubules in interphase cells. During mitosis, required for the organization and orientation of the mitotic spindle.
Synonyms:	Carbohydrate kinase-like protein; CARKL; Sedoheptulokinase; SHK; SHPK
Note:	For research use only, not for use in diagnostic procedure.


[View online »](#)

## Product images:



Western blot (WB) analysis of CEP70 (L276) Antibody at 1:500 dilution Lane1:The Testis tissue lysate of Rat(30ug) Lane2:The Brain tissue lysate of Mouse(40ug) Lane3:SGC7901 whole cell lysate(40ug) Lane4:HEK293T whole cell lysate(40ug)