

Product datasheet for **TA392841**

CEP70 Rabbit Polyclonal Antibody

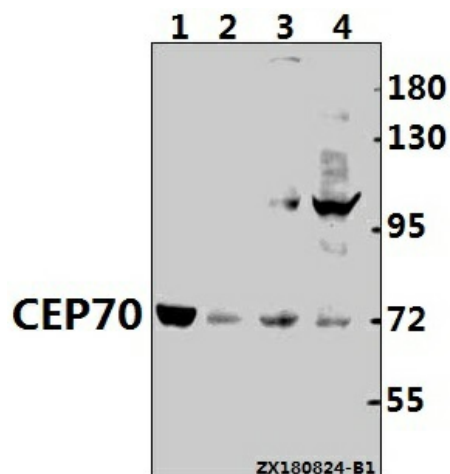
Product data:

| | |
|-------------------------|---|
| Product Type: | Primary Antibodies |
| Applications: | WB |
| Recommended Dilution: | WB: 1:500~1:1000 |
| Reactivity: | Human, Mouse, Rat |
| Host: | Rabbit |
| Isotype: | IgG |
| Clonality: | Polyclonal |
| Immunogen: | Synthetic peptide, corresponding to amino acids 23-83 of Human CARKL. |
| Specificity: | CEP70 pAb detects endogenous levels of CEP70 protein. |
| Formulation: | Rabbit IgG, 1mg/ml in PBS with 0.02% sodium azide, 50% glycerol, pH7.2 |
| Concentration: | 1mg/ml |
| Conjugation: | Unconjugated |
| Storage: | Store at 4°C short term. Aliquot and store at -20°C long term. Avoid freeze-thaw cycles. |
| Stability: | 1 year |
| Predicted Protein Size: | ~ 70 kDa |
| Gene Name: | centrosomal protein 70 |
| Database Link: | Entrez Gene 80321 Human Q8NHQ1 |
| Background: | Centrosomal protein of 70 kDa, plays a role in the organization of both preexisting and nascent microtubules in interphase cells. During mitosis, required for the organization and orientation of the mitotic spindle. |
| Synonyms: | Carbohydrate kinase-like protein; CARKL; Sedoheptulokinase; SHK; SHPK |
| Note: | For research use only, not for use in diagnostic procedure. |



[View online »](#)

Product images:



Western blot (WB) analysis of CEP70 (L276) Antibody at 1:500 dilution Lane1:The Testis tissue lysate of Rat(30ug) Lane2:The Brain tissue lysate of Mouse(40ug) Lane3:SGC7901 whole cell lysate(40ug) Lane4:HEK293T whole cell lysate(40ug)