

## Product datasheet for **TA392840M**

### **PNPLA8 Rabbit Polyclonal Antibody**

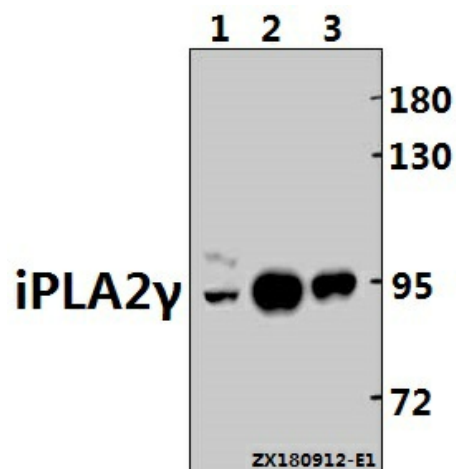
#### **Product data:**

Product Type:	Primary Antibodies
Applications:	WB
Recommended Dilution:	WB: 1:500~1:1000
Reactivity:	Human, Mouse
Host:	Rabbit
Isotype:	IgG
Clonality:	Polyclonal
Immunogen:	Synthetic peptide, corresponding to amino acids 700-760 of Human iPLA2γ.
Specificity:	iPLA2γ (L730) polyclonal antibody detects endogenous levels of iPLA2γ protein.
Formulation:	Rabbit IgG, 1mg/ml in PBS with 0.02% sodium azide, 50% glycerol, pH7.2
Concentration:	1mg/ml
Conjugation:	Unconjugated
Storage:	Store at 4°C short term. Aliquot and store at -20°C long term. Avoid freeze-thaw cycles.
Stability:	1 year
Predicted Protein Size:	~ 88 kDa
Gene Name:	patatin like phospholipase domain containing 8
Database Link:	<a href="#">Entrez Gene 50640 Human Q9NP80</a>
Background:	Calcium-independent phospholipase A2, which catalyzes the hydrolysis of the sn-2 position of glycerophospholipids, PtdSer and to a lower extent PtdCho. Cleaves membrane phospholipids.
Synonyms:	BM-043; Calcium-independent phospholipase A2-gamma; Intracellular membrane-associated calcium-independent phospholipase A2 gamma; iPLA2-2; iPLA2-gamma; IPLA2G; IPLA22; Patatin-like phospholipase domain-containing protein 8; PNPLA-gamma; PNPLA8
Note:	For research use only, not for use in diagnostic procedure.



[View online »](#)

Product images:



Western blot (WB) analysis of iPLA2γ (L730) polyclonal antibody at 1:500 dilution Lane1:AML-12 whole cell lysate(40ug) Lane2:Panc1 whole cell lysate(10ug) Lane3:L02 whole cell lysate(10ug)