

## Product datasheet for **TA392840**

### PNPLA8 Rabbit Polyclonal Antibody

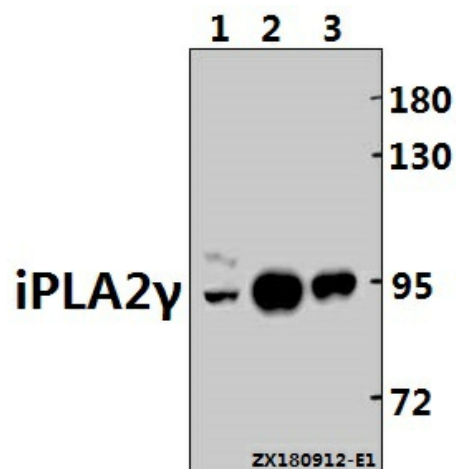
#### Product data:

|                         |   |
|-------------------------|---|
| Product Type:           | Primary Antibodies  |
| Applications:           | WB  |
| Recommended Dilution:   | WB: 1:500~1:1000  |
| Reactivity:             | Human, Mouse  |
| Host:                   | Rabbit  |
| Isotype:                | IgG   |
| Clonality:              | Polyclonal  |
| Immunogen:              | Synthetic peptide, corresponding to amino acids 700-760 of Human iPLA2 $\gamma$ .   |
| Specificity:            | iPLA2 $\gamma$ (L730) polyclonal antibody detects endogenous levels of iPLA2 $\gamma$ protein.  |
| Formulation:            | Rabbit IgG, 1mg/ml in PBS with 0.02% sodium azide, 50% glycerol, pH7.2  |
| Concentration:          | 1mg/ml  |
| Conjugation:            | Unconjugated  |
| Storage:                | Store at 4°C short term. Aliquot and store at -20°C long term. Avoid freeze-thaw cycles.  |
| Stability:              | 1 year  |
| Predicted Protein Size: | ~ 88 kDa  |
| Gene Name:              | patatin like phospholipase domain containing 8  |
| Database Link:          | <a href="#">Entrez Gene 50640 Human Q9NP80</a>  |
| Background:             | Calcium-independent phospholipase A2, which catalyzes the hydrolysis of the sn-2 position of glycerophospholipids, PtdSer and to a lower extent PtdCho. Cleaves membrane phospholipids.   |
| Synonyms:               | BM-043; Calcium-independent phospholipase A2-gamma; Intracellular membrane-associated calcium-independent phospholipase A2 gamma; iPLA2-2; iPLA2-gamma; IPLA2G; IPLA22; Patatin-like phospholipase domain-containing protein 8; PNPLA-gamma; PNPLA8 |
| Note:                   | For research use only, not for use in diagnostic procedure.   |



[View online »](#)

## Product images:



Western blot (WB) analysis of iPLA2 $\gamma$  (L730) polyclonal antibody at 1:500 dilution Lane1:AML-12 whole cell lysate(40ug) Lane2:Panc1 whole cell lysate(10ug) Lane3:L02 whole cell lysate(10ug)