

## Product datasheet for **TA392839S**

### RPL17 Rabbit Polyclonal Antibody

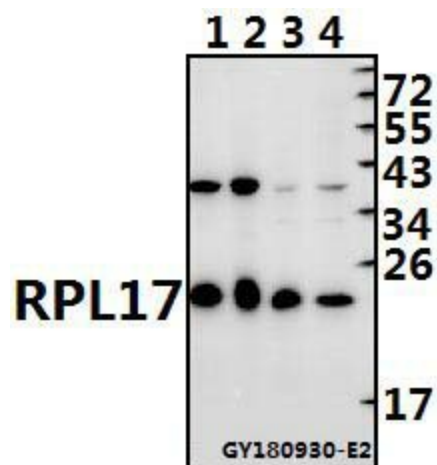
#### Product data:

Product Type:	Primary Antibodies
Applications:	WB
Recommended Dilution:	WB: 1:500~1:1000
Reactivity:	Human, Mouse, Rat
Host:	Rabbit
Isotype:	IgG
Clonality:	Polyclonal
Immunogen:	Synthetic peptide, corresponding Human RPL17.
Specificity:	RPL17 polyclonal antibody detects endogenous levels of RPL17 protein.
Formulation:	Rabbit IgG, 1mg/ml in PBS with 0.02% sodium azide, 50% glycerol, pH7.2
Concentration:	1mg/ml
Conjugation:	Unconjugated
Storage:	Store at 4°C short term. Aliquot and store at -20°C long term. Avoid freeze-thaw cycles.
Stability:	1 year
Predicted Protein Size:	~ 21 kDa
Gene Name:	ribosomal protein L17
Database Link:	<a href="#">Entrez Gene 6139 Human P18621</a>
Background:	Ribosomes, the organelles that catalyze protein synthesis, consist of a small 40S subunit and a large 60S subunit. Together these subunits are composed of 4 RNA species and approximately 80 structurally distinct proteins. RPL17 gene encodes a ribosomal protein that is a component of the 60S subunit belonging to the L22P family of ribosomal proteins. It is located in the cytoplasm.
Synonyms:	60S ribosomal protein L17; 60S ribosomal protein L23; Large ribosomal subunit protein uL22; PD-1; RPL17
Note:	For research use only, not for use in diagnostic procedure.



[View online »](#)

## Product images:



Western blot (WB) analysis of RPL17 polyclonal antibody at 1:500 dilution Lane1:PC12 whole cell lysate(40ug) Lane2:The Lung tissue lysate of Mouse(20ug) Lane3:L02 whole cell lysate(20ug) Lane4:Panc1 whole cell lysate(20ug)