

## Product datasheet for **TA392837S**

### MRP3 (ABCC3) Rabbit Polyclonal Antibody

#### Product data:

Product Type:	Primary Antibodies
Applications:	WB
Recommended Dilution:	WB: 1:500~1:1000
Reactivity:	Human, Mouse, Rat
Host:	Rabbit
Isotype:	IgG
Clonality:	Polyclonal
Immunogen:	Synthetic peptide, corresponding to amino acids 981-1030 of Human MRP3.
Specificity:	MRP3 (L1010) polyclonal antibody detects endogenous levels of MRP3 protein.
Formulation:	Rabbit IgG, 1mg/ml in PBS with 0.02% sodium azide, 50% glycerol, pH7.2
Concentration:	1mg/ml
Conjugation:	Unconjugated
Storage:	Store at 4°C short term. Aliquot and store at -20°C long term. Avoid freeze-thaw cycles.
Stability:	1 year
Predicted Protein Size:	~ 260 kDa
Gene Name:	ATP binding cassette subfamily C member 3
Database Link:	<a href="#">Entrez Gene 8714 Human O15438</a>



[View online »](#)

**Background:**

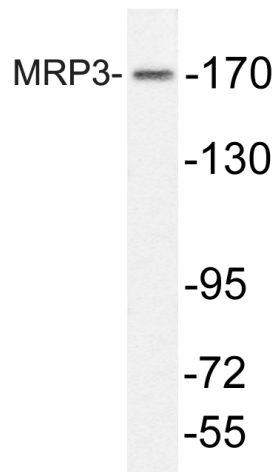
MRP1 is an integral membrane protein that contains an MDR-like core, an N-terminal membrane-bound region and a cytoplasmic linker, and it is expressed in various cerebral cells, as well as in lung, testis and peripheral blood. The MRP gene family also includes MRP2, which is alternatively designated cMOAT (for canalicular multispecific organic anion transporter) and MRP3, which are both conjugate export pumps expressed predominantly in hepatocytes. MRP2 localizes exclusively to the apical membrane and is constitutively expressed at a high level in normal liver cells. Conversely, MRP3 localizes to the basolateral membrane where it also mediates the transport of the organic anion S-(2,4-dinitrophenyl)-glutathione toward the basolateral side of the membrane. MRP3 is normally expressed at comparatively lower levels than MRP2 and increases only when secretion across the apical membrane by MRP2 is impaired.

**Synonyms:**

ABCC3; ATP-binding cassette sub-family C member 3; Canalicular multispecific organic anion transporter 2; CMOAT2; MLP2; MOAT-D; MRP3; Multi-specific organic anion transporter D; Multidrug resistance-associated protein 3

**Note:**

For research use only, not for use in diagnostic procedure.

**Product images:**

Western blot (WB) analysis of MRP3 (L1010) pAb at 1:500 dilution Lane1:A549 whole cell lysate(40ug) Lane2:Hela whole cell lysate(40ug) Lane3:PC12 whole cell lysate(40ug) Lane4:CT26 whole cell lysate(40ug)