

## Product datasheet for **TA392836M**

### SLC16A13 Rabbit Polyclonal Antibody

#### Product data:

Product Type:	Primary Antibodies
Applications:	WB
Recommended Dilution:	WB: 1:500~1:1000
Reactivity:	Human, Mouse, Rat
Host:	Rabbit
Isotype:	IgG
Clonality:	Polyclonal
Immunogen:	Synthetic peptide, corresponding to amino acids 389-442 of Human SLC16A13.
Specificity:	SLC16A13 (L423) polyclonal antibody detects endogenous levels of SLC16A13 protein.
Formulation:	Rabbit IgG, 1mg/ml in PBS with 0.02% sodium azide, 50% glycerol, pH7.2
Concentration:	1mg/ml
Conjugation:	Unconjugated
Storage:	Store at 4°C short term. Aliquot and store at -20°C long term. Avoid freeze-thaw cycles.
Stability:	1 year
Predicted Protein Size:	~ 40 kDa
Gene Name:	solute carrier family 16 member 13
Database Link:	<a href="#">Entrez Gene 201232 Human Q7RTY0</a>



[View online »](#)

**Background:**

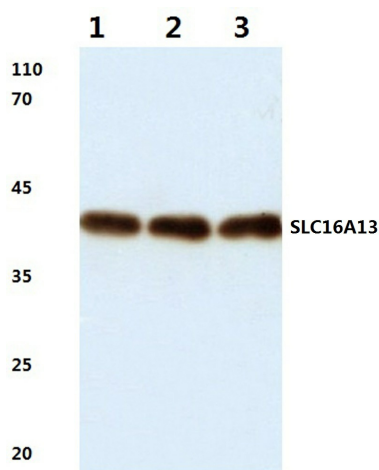
Monocarboxylates, such as lactate and pyruvate, play an integral role in cellular metabolism. Lactic acid is produced in large quantities as a result of glycolysis, which provides the majority of ATP to cells under normal physiological conditions. However, accumulation of lactic acid leads to a decrease in intracellular pH and, thus, to a cessation of glycolysis. In order for glycolysis to continue at a high rate, lactic acid must be transported out of the cell. This transport process is carried out by a family of monocarboxylate transporters (MCTs), which function as proton symports and are stereoselective for L-lactate. MCT13 (Monocarboxylate transporter 13), also known as SLC16A13 (Solute carrier family 16 member 13), is a 426 amino acid multi-pass membrane protein that belongs to the MCT transport family. Functioning as a proton-linked monocarboxylate transporter, MCT13 catalyzes the rapid transports of molecules, such as lactate, across the plasma membrane.

**Synonyms:**

MCT 13; MCT13; Monocarboxylate transporter 13; SLC16A13; Solute carrier family 16 member 13

**Note:**

For research use only, not for use in diagnostic procedure.

**Product images:**


Western blot (WB) analysis of SLC16A13 (L423) pAb at 1:500 dilution Lane1:C6 whole cell lysate(40ug) Lane2:3T3-L1 whole cell lysate(40ug) Lane3:MCF-7 whole cell lysate(40ug) Lane4:HepG2 whole cell lysate(40ug) Lane5:H1792 whole cell lysate(20ug)