

Product datasheet for **TA392835M**

MED18 Rabbit Polyclonal Antibody

Product data:

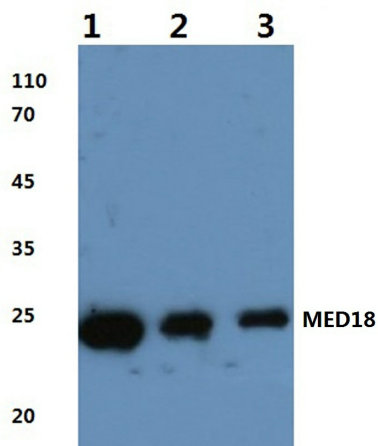
Product Type:	Primary Antibodies
Applications:	WB
Recommended Dilution:	WB: 1:500~1:1000
Reactivity:	Human, Mouse, Rat
Host:	Rabbit
Isotype:	IgG
Clonality:	Polyclonal
Immunogen:	Synthetic peptide, corresponding to amino acids 72-120 of Human MED18.
Specificity:	MED18 (V102) polyclonal antibody detects endogenous levels of MED18 protein.
Formulation:	Rabbit IgG, 1mg/ml in PBS with 0.02% sodium azide, 50% glycerol, pH7.2
Concentration:	1mg/ml
Conjugation:	Unconjugated
Storage:	Store at 4°C short term. Aliquot and store at -20°C long term. Avoid freeze-thaw cycles.
Stability:	1 year
Predicted Protein Size:	~ 24 kDa
Gene Name:	mediator complex subunit 18
Database Link:	Entrez Gene 54797 Human Q9BUE0
Background:	<p>In mammalian cells, transcription is regulated in part by high molecular weight co-activating complexes that mediate signals between transcriptional activators and RNA polymerase II (Pol II). The mediator complex is one such multi-protein structure that functions as a bridge between regulatory proteins and Pol II, thereby regulating Pol II-dependent transcription. Med18 (mediator complex subunit 18), also known as p28b, is a 208 amino acid protein that localizes to nucleus and exists as a component of the mediator complex. Working in tandem with several other proteins, including Med8 and Med25, Med18 serves as a scaffold for the assembly of a functional preinitiation complex with Pol II and general transcription factors, thereby activating the transcription of Pol II-dependent genes.</p>


[View online »](#)

Synonyms: MED18; Mediator complex subunit 18; Mediator of RNA polymerase II transcription subunit 18; p28b

Note: For research use only, not for use in diagnostic procedure.

Product images:



Western blot (WB) analysis of MED18 (V102) pAb at 1:1000 dilution Lane1:HepG2 whole cell lysate(20ug) Lane2:SGC7901 whole cell lysate(20ug) Lane3:The Brain tissue lysate of Rat(40ug) Lane4:The Brain tissue lysate of Mouse(40ug)