

Product datasheet for **TA392833S**

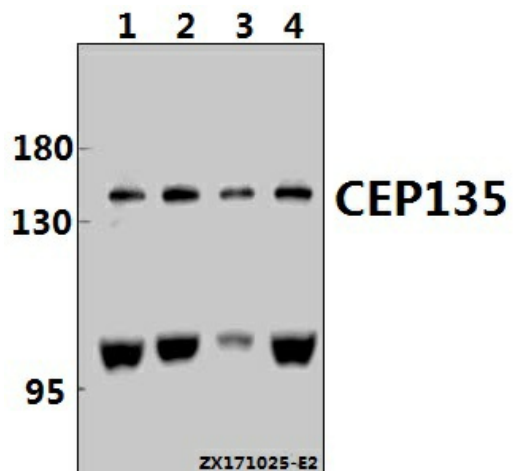
CEP135 Rabbit Polyclonal Antibody

Product data:

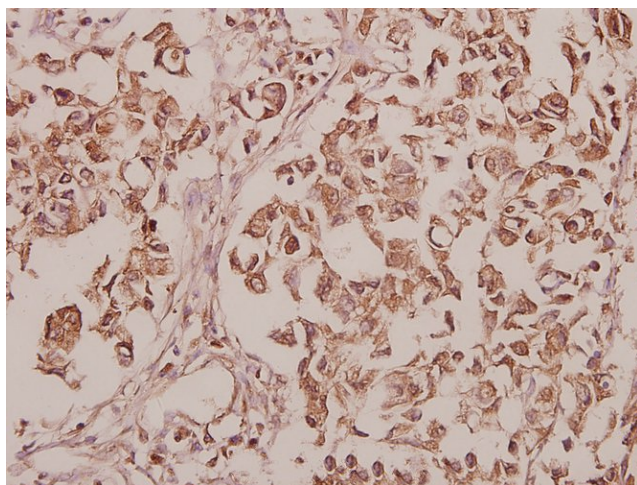
Product Type:	Primary Antibodies
Applications:	WB
Recommended Dilution:	WB: 1:500~1:1000 IHC: 1:50~1:200
Reactivity:	Human, Rat
Host:	Rabbit
Isotype:	IgG
Clonality:	Polyclonal
Immunogen:	Synthetic peptide, corresponding to amino acids 1087-1140 of Human CEP135.
Specificity:	CEP135 (H1117) polyclonal antibody detects endogenous levels of CEP135 protein.
Formulation:	Rabbit IgG, 1mg/ml in PBS with 0.02% sodium azide, 50% glycerol, pH7.2
Concentration:	1mg/ml
Conjugation:	Unconjugated
Storage:	Store at 4°C short term. Aliquot and store at -20°C long term. Avoid freeze-thaw cycles.
Stability:	1 year
Predicted Protein Size:	~ 135 kDa
Gene Name:	centrosomal protein 135
Database Link:	Entrez Gene 9662 Human Q66GS9
Background:	This gene encodes a centrosomal protein, which acts as a scaffolding protein during early centriole biogenesis, and is also required for centriole-centriole cohesion during interphase. Mutations in this gene are associated with autosomal recessive primary microcephaly-8.
Synonyms:	Centrosomal protein 4; centrosomal protein 135 kDa; centrosomal protein 135kDa; Centrosomal protein of 135 kDa; centrosome protein 4; centrosome protein cep135; CEP4; Cep135
Note:	For research use only, not for use in diagnostic procedure.

[View online »](#)

Product images:



Western blot (WB) analysis of CEP135 (H1117) pAb at 1:1000 dilution Lane1:PC12 whole cell lysate(40ug) Lane2:A2780 whole cell lysate(40ug) Lane3:SK-OVCAR3 whole cell lysate(40ug) Lane4:Hela whole cell lysate(40ug)



Immunohistochemistry (IHC) analyzes of CEP135 (H1117) pAb in paraffin-embedded human colorectal carcinoma tissue at 1:50.