

## Product datasheet for **TA392832M**

### CNN2 Rabbit Polyclonal Antibody

#### Product data:

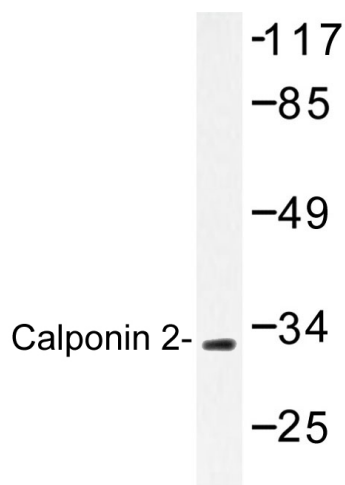
Product Type:	Primary Antibodies
Applications:	WB
Recommended Dilution:	WB: 1:500~1:1000 IHC: 1:50~1:200 IF: 1:50~1:200
Reactivity:	Human, Mouse
Host:	Rabbit
Isotype:	IgG
Clonality:	Polyclonal
Immunogen:	Synthetic peptide, corresponding to amino acids 122-170 of Human Calponin 2.
Specificity:	Calponin 2 (D156) polyclonal antibody detects endogenous levels of Calponin 2 protein.
Formulation:	Rabbit IgG, 1mg/ml in PBS with 0.02% sodium azide, 50% glycerol, pH7.2
Concentration:	1mg/ml
Conjugation:	Unconjugated
Storage:	Store at 4°C short term. Aliquot and store at -20°C long term. Avoid freeze-thaw cycles.
Stability:	1 year
Predicted Protein Size:	~ 33 kDa
Gene Name:	calponin 2
Database Link:	<a href="#">Entrez Gene 1265 Human Q99439</a>
Background:	Calponin, a 34 kDa protein, regulates smooth muscle cell contraction and is a marker of smooth muscle cell differentiation. Calponin, an actin- and tropomyosin-binding protein, is characterized as an inhibitory factor of smooth-muscle actomyosin activity. Calponin is implicated in the regulation of smooth muscle contraction through its interaction with F-actin and inhibition of the actin-activated MgATPase activity of phosphorylated myosin. Both properties are lost following phosphorylation (primarily at serine 175) by protein kinase C or calmodulin-dependent protein kinase II. The three forms of Calponin, Calponin 1 (basic Calponin), Calponin 2 (neutral Calponin), and Calponin 3 (acidic Calponin) are found in smooth muscle tissue. Additionally, Calponin 2 is found in heart muscle tissue and Calponin 3 is found in the brain.


[View online »](#)

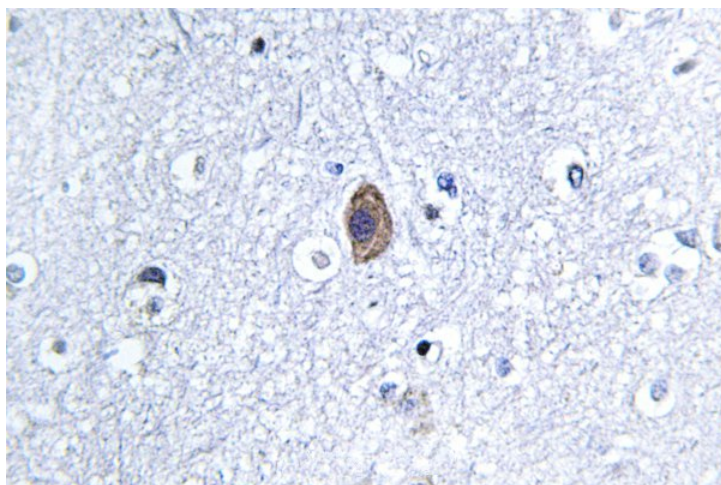
**Synonyms:** Calponin-2; Calponin H2, smooth muscle; CNN2; Neutral calponin

**Note:** For research use only, not for use in diagnostic procedure.

**Product images:**



Western blot (WB) analysis of Calponin 2 (D156) pAb at 1:500 dilution Lane1:AML-12 whole cell lysate(40ug) Lane2:H9C2 whole cell lysate(20ug) Lane3:L02 whole cell lysate(40ug) Lane4:HepG2 whole cell lysate(40ug) Lane5:Hela whole cell lysate(40ug)



Immunohistochemistry (IHC) analyzes of Calponin 2 (D156) pAb in paraffin-embedded human brain tissue.