

## Product datasheet for **TA392831S**

### DQX1 Rabbit Polyclonal Antibody

#### Product data:

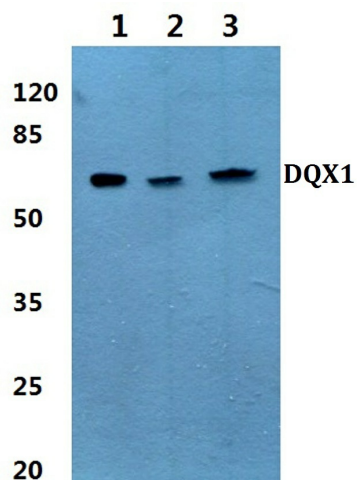
Product Type:	Primary Antibodies
Applications:	WB
Recommended Dilution:	WB: 1:500~1:1000
Reactivity:	Human, Mouse, Rat
Host:	Rabbit
Isotype:	IgG
Clonality:	Polyclonal
Immunogen:	Synthetic peptide, corresponding to amino acids 560-610 of Human DQX1.
Specificity:	DQX1 (L595) polyclonal antibody detects endogenous levels of DQX1 protein.
Formulation:	Rabbit IgG, 1mg/ml in PBS with 0.02% sodium azide, 50% glycerol, pH7.2
Concentration:	1mg/ml
Conjugation:	Unconjugated
Storage:	Store at 4°C short term. Aliquot and store at -20°C long term. Avoid freeze-thaw cycles.
Stability:	1 year
Predicted Protein Size:	~ 66 kDa
Gene Name:	DEAQ-box RNA dependent ATPase 1
Database Link:	<a href="#">Entrez Gene 165545 Human Q8TE96</a>
Background:	DQX1 (DEAQ box RNA-dependent ATPase 1), also known as FLJ23757, is a 71 amino acid protein that contains one helicase ATP-binding domain and one helicase C-terminal domain. Localized to the nucleus, DQX1 catalyzes the conversion of ATP to ADP and a phosphate. Expressed as three isoforms produced by alternative splicing events, DQX1 is encoded by a gene that maps to human chromosome 2. As the second largest human chromosome, chromosome 2 makes up approximately 8% of the human genome and contains 237 million bases encoding over 1,400 genes. A number of genetic diseases are linked to genes on chromosome 2, including Harlequin ichthyosis, sitosterolemia and Alström syndrome.
Synonyms:	ATP-dependent RNA helicase DQX1; DEAQ box polypeptide 1



[View online »](#)

Note: For research use only, not for use in diagnostic procedure.

**Product images:**



Western blot (WB) analysis of DQX1 (L595) pAb at 1:500 dilution Lane1:HepG2 whole cell lysate(40ug) Lane2:HCT116 whole cell lysate(40ug) Lane3:SGC7901 whole cell lysate(40ug) Lane4:CT26 whole cell lysate(40ug) Lane5:H9C2 whole cell lysate(40ug)