

## Product datasheet for **TA392830M**

### ABCA8 Rabbit Polyclonal Antibody

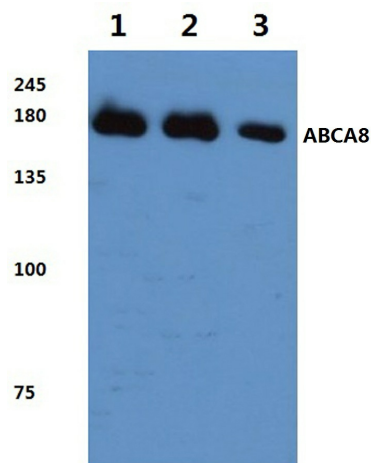
#### Product data:

Product Type:	Primary Antibodies
Applications:	WB
Recommended Dilution:	WB: 1:500~1:1000
Reactivity:	Human, Mouse, Rat
Host:	Rabbit
Isotype:	IgG
Clonality:	Polyclonal
Immunogen:	Synthetic peptide, corresponding to amino acids 1171-1220 of Human ABCA8.
Specificity:	ABCA8 (F1195) polyclonal antibody detects endogenous levels of ABCA8 protein.
Formulation:	Rabbit IgG, 1mg/ml in PBS with 0.02% sodium azide, 50% glycerol, pH7.2
Concentration:	1mg/ml
Conjugation:	Unconjugated
Storage:	Store at 4°C short term. Aliquot and store at -20°C long term. Avoid freeze-thaw cycles.
Stability:	1 year
Predicted Protein Size:	~ 179 kDa
Gene Name:	ATP binding cassette subfamily A member 8
Database Link:	<a href="#">Entrez Gene 10351 Human O94911</a>
Background:	ATP-binding cassette (ABC) transporters are an evolutionarily conserved family of proteins that catalyze the transport of molecules across extracellular and intracellular membranes by harnessing the energy of ATP hydrolysis. ABCA8 (ATP-binding cassette, sub-family A (ABC1), member 8) is a 1,581 amino acid multi-pass membrane protein that contains two ABC transporter domains and belongs to the ABC transporter family. Expressed in a variety of tissues with particularly high expression in liver, heart and skeletal muscle, ABCA8 functions as an ATP-dependent lipophilic drug transporter that exists as multiple alternatively spliced isoforms.
Synonyms:	ATP-binding cassette sub-family A member 8; KIAA0822

[View online »](#)

**Note:** For research use only, not for use in diagnostic procedure.

**Product images:**



Western blot (WB) analysis of ABCA8 (F1195) pAb at 1:500 dilution Lane1:H9C2 whole cell lysate(40ug) Lane2:AML-12 whole cell lysate(40ug) Lane3:SK-OVCAR3 whole cell lysate(40ug) Lane4:HepG2 whole cell lysate(40ug) Lane5:L02 whole cell lysate(10ug)