

## Product datasheet for **TA392829S**

### Apolipoprotein L 2 (APOL2) Rabbit Polyclonal Antibody

#### Product data:

Product Type:	Primary Antibodies
Applications:	WB
Recommended Dilution:	WB: 1:500~1:1000 IHC: 1:50~1:200
Reactivity:	Human, Mouse, Rat
Host:	Rabbit
Isotype:	IgG
Clonality:	Polyclonal
Immunogen:	Synthetic peptide, corresponding to amino acids 196-240of Human ApoL2.
Specificity:	ApoL2 (R229) polyclonal antibody detects endogenous levels of ApoL2 protein.
Formulation:	Rabbit IgG, 1mg/ml in PBS with 0.02% sodium azide, 50% glycerol, pH7.2
Concentration:	1mg/ml
Conjugation:	Unconjugated
Storage:	Store at 4°C short term. Aliquot and store at -20°C long term. Avoid freeze-thaw cycles.
Stability:	1 year
Predicted Protein Size:	~ 37 kDa
Gene Name:	apolipoprotein L2
Database Link:	<a href="#">Entrez Gene 23780 Human Q9BQE5</a>



[View online »](#)

**Background:**

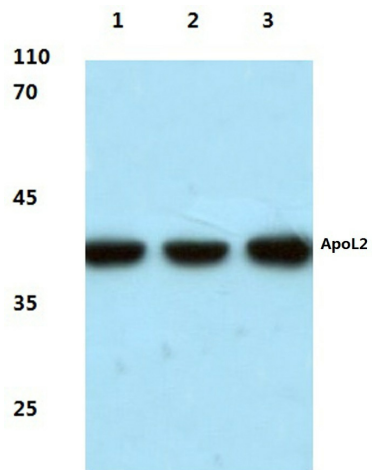
Apolipoproteins are protein components of plasma lipoproteins. The apolipoprotein L gene family encodes six highly homologous proteins designated apoL 1-6, which are associated with large high density type lipoproteins (HDL). The human apoL family maps to chromosome 22q12.3 within a 127,000-bp region. ApoL2 and apoL3 may allow the binding of lipids to organ-elles or may be involved in the movement of lipids in the cytoplasm. ApoL2 localizes to the cytoplasm and is widely expressed, with the highest levels observed in the lung, thymus, pancreas, placenta, adult brain and prostate. The apoL2 protein is also detected in the spleen, liver, kidney, colon, small intestine, uterus, spinal cord, adrenal gland, salivary gland, trachea, mammary gland, skeletal muscle, testis and fetal brain and liver. ApoL3 also localizes to the cytoplasm and is widely expressed, with highest levels detected in the prostate, lung and placenta. It is also detected in kidney, bone marrow, spleen, thymus, spinal cord, adrenal gland, salivary gland, trachea and mammary gland. Lower levels of apoL3 are observed in the brain, heart, fetal liver, pancreas and testis.

**Synonyms:**

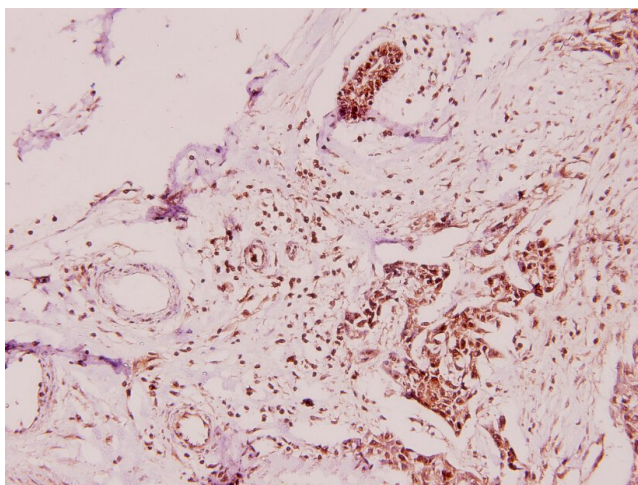
ApoL-2; APOL2; Apolipoprotein L-2; Apolipoprotein L2

**Note:**

For research use only, not for use in diagnostic procedure.

**Product images:**

Western blot (WB) analysis of ApoL2 (R229) pAb at 1:500 dilution Lane1:The Brain tissue lysate of Mouse(40ug) Lane2:The Brain tissue lysate of Rat(40ug) Lane3:PC3 whole cell lysate(40ug) Lane4:Hela whole cell lysate(40ug)



Immunohistochemistry (IHC) analyzes of ApoL2 (R229) pAb in paraffin-embedded human breast carcinoma tissue at 1:100.