

Product datasheet for **TA392828S**

ARF4 Rabbit Polyclonal Antibody

Product data:

Product Type:	Primary Antibodies
Applications:	WB
Recommended Dilution:	WB: 1:500~1:1000 IHC: 1:50~1:200
Reactivity:	Human, Mouse
Host:	Rabbit
Isotype:	IgG
Clonality:	Polyclonal
Immunogen:	Synthetic peptide, corresponding to amino acids 80-130 of Human ARF4.
Specificity:	ARF4 (E106) polyclonal antibody detects endogenous levels of ARF4 protein.
Formulation:	Rabbit IgG, 1mg/ml in PBS with 0.02% sodium azide, 50% glycerol, pH7.2
Concentration:	1mg/ml
Conjugation:	Unconjugated
Storage:	Store at 4°C short term. Aliquot and store at -20°C long term. Avoid freeze-thaw cycles.
Stability:	1 year
Predicted Protein Size:	~ 21 kDa
Gene Name:	ADP ribosylation factor 4
Database Link:	Entrez Gene 378 Human P18085

Background: The ADP-ribosylation factor (ARF) protein family are structurally and functionally conserved members of the Ras superfamily of regulatory GTP-binding proteins. ARFs influence vesicle trafficking and signal transduction in eukaryotic cells. ARF-dependent regulatory mechanisms include the coordination of spectrin interactions with Golgi membranes and the association of actin to the Golgi via rho family-dependent G-protein localization (Rac, CDC42) and WASP/Arp2/3 complexes. Additionally, ARFs play a central role in maintenance of organelle integrity, assembly of coat proteins, and activation of phospholipase D. The ARF proteins are categorized as class I (ARF1, ARF2, and ARF3), class II (ARF4 and ARF5) and class III (ARF6); members of each class share a common gene organization. The human ARF1 gene maps to chromosome 1q42, contains 5 exons and 4 introns, and encodes a 181 amino acid protein.

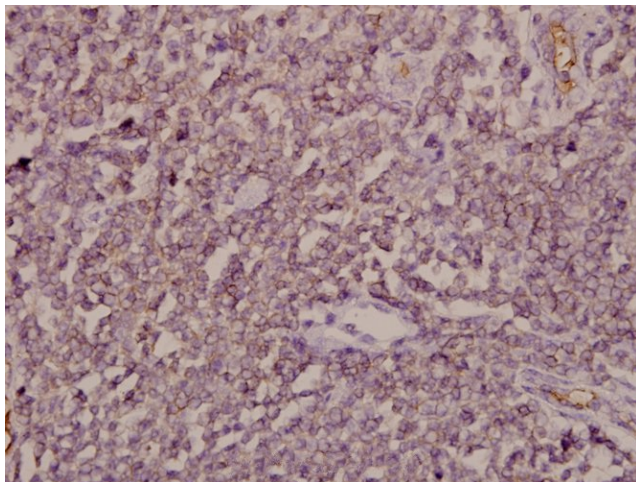


[View online »](#)

Synonyms: ADP ribosylation factor 2; ADP ribosylation factor 4; ARF2

Note: For research use only, not for use in diagnostic procedure.

Product images:



Immunohistochemistry (IHC) analyzes of ARF4 (E106) pAb in paraffin-embedded human tonsil carcinoma tissue at 1:50.