

## Product datasheet for **TA392827**

### Lysophospholipase 1 (LYPLA1) Rabbit Polyclonal Antibody

#### Product data:

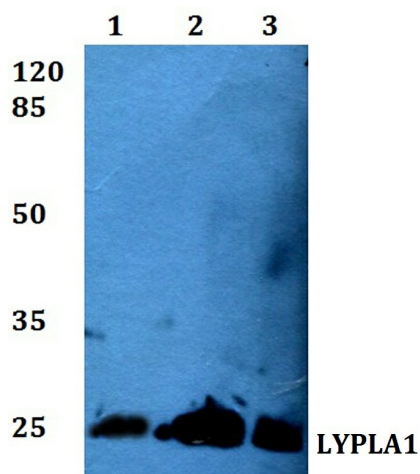
Product Type:	Primary Antibodies
Applications:	WB
Recommended Dilution:	WB: 1:500~1:1000 IHC: 1:50~1:200
Reactivity:	Human, Mouse, Rat
Host:	Rabbit
Isotype:	IgG
Clonality:	Polyclonal
Immunogen:	Synthetic peptide, corresponding to amino acids 61-110 of Human LYPLA1.
Specificity:	LYPLA1 (K90) polyclonal antibody detects endogenous levels of LYPLA1 protein.
Formulation:	Rabbit IgG, 1mg/ml in PBS with 0.02% sodium azide, 50% glycerol, pH7.2
Concentration:	1mg/ml
Conjugation:	Unconjugated
Storage:	Store at 4°C short term. Aliquot and store at -20°C long term. Avoid freeze-thaw cycles.
Stability:	1 year
Predicted Protein Size:	~ 25 kDa
Gene Name:	lysophospholipase I
Database Link:	<a href="#">Entrez Gene 10434 Human O75608</a>
Background:	Acyl-protein thioesterase 1 (APT1, Lysophospholipase 1) is a member of a family of critical enzymes, lysophospholipases, that act on biological membranes to regulate the multifunctional lysophospholipids. APT1 hydrolyzes fatty acids from S-acylated cysteine residues in proteins such as trimeric G alpha proteins or HRAS. The role of APT1 in regulating lysophospholipids is important because increased levels of lysophospholipids are detected in a variety of diseases, including atherosclerosis and hyperlipidemia. Regulated expression of acyl-protein thioesterase by PKC has been suggested to have important implications for signal transduction processes.
Synonyms:	Acyl-protein thioesterase 1; APT-1; APT1; hAPT1; LPL-I; LPL1; LYPLA1; Lysophospholipase 1; Lysophospholipase I; LysoPLA I



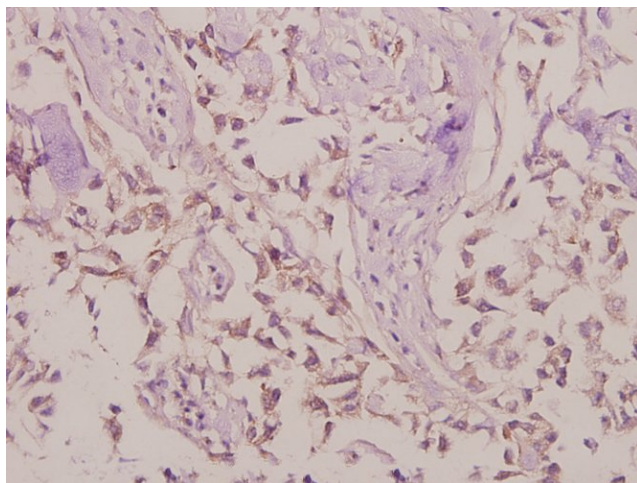
[View online »](#)

Note: For research use only, not for use in diagnostic procedure.

### Product images:



Western blot (WB) analysis of LYPLA1 (K90) polyclonal antibody at 1:500 dilution Lane1:A549 whole cell lysate Lane2:Mouse liver tissue lysate Lane3:Rat liver tissue lysate



Immunohistochemistry (IHC) analyzes of LYPLA1 (K90) pAb in paraffin-embedded human colorectal carcinoma tissue at 1:50.