

Product datasheet for **TA392826M**

RPL27A Rabbit Polyclonal Antibody

Product data:

Product Type:	Primary Antibodies
Applications:	WB
Recommended Dilution:	WB: 1:500~1:1000 IHC: 1:50~1:200
Reactivity:	Human, Mouse, Rat
Host:	Rabbit
Isotype:	IgG
Clonality:	Polyclonal
Immunogen:	Synthetic peptide, corresponding to amino acids 120-160 of Human Ribosomal Protein L27A.
Specificity:	Ribosomal Protein L27A (V140) polyclonal antibody detects endogenous levels of Ribosomal Protein L27A protein.
Formulation:	Rabbit IgG, 1mg/ml in PBS with 0.02% sodium azide, 50% glycerol, pH7.2
Concentration:	1mg/ml
Conjugation:	Unconjugated
Storage:	Store at 4°C short term. Aliquot and store at -20°C long term. Avoid freeze-thaw cycles.
Stability:	1 year
Predicted Protein Size:	~ 17 kDa
Gene Name:	ribosomal protein L27a
Database Link:	Entrez Gene 6157 Human P46776

[View online »](#)

Background:

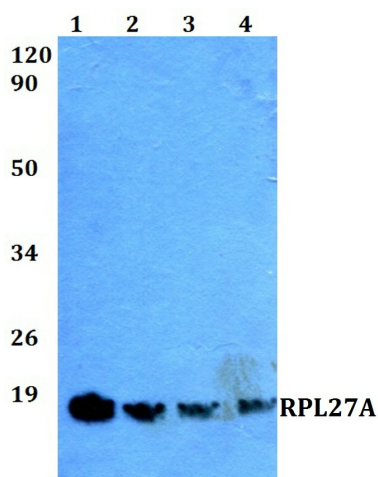
Ribosomes, the organelles that catalyze protein synthesis, are composed of a small subunit (40S) and a large subunit (60S) that consist of over 80 distinct ribosomal proteins. Mammalian ribosomal proteins are encoded by multigene families that contain processed pseudogenes and one functional intron-containing gene within their coding regions. Ribosomal Protein L27, also known as RPL27, is a 136 amino acid protein belonging to the ribosomal protein L27e family exists as a component of the 60S subunit, possibly playing a role in protein translation. Like most ribosomal proteins, Ribosomal Protein L27 exists as multiple processed pseudogenes that are scattered throughout the genome. Considered a novel candidate housekeeping gene, the gene encoding Ribosomal Protein L27 maps to human chromosome 17, which comprises over 2.5% of the human genome and encodes over 1,200 genes.

Synonyms:

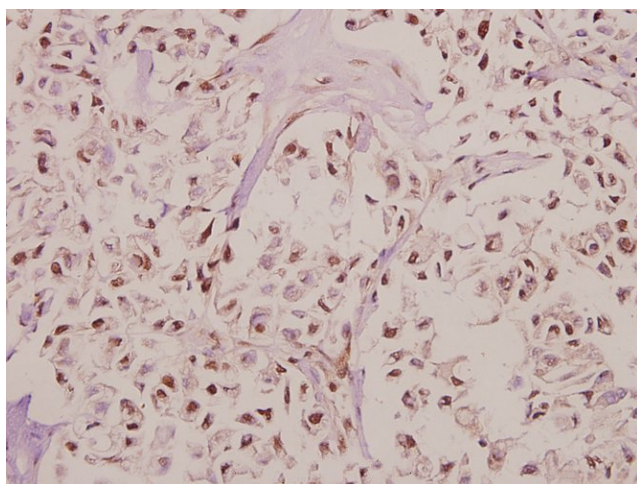
60S ribosomal protein L27a

Note:

For research use only, not for use in diagnostic procedure.

Product images:


Western blot (WB) analysis of RPL27A (V140) pAb at 1:500 dilution Lane1:Hela whole cell lysate(40ug) Lane2:MCF-7 whole cell lysate(40ug) Lane3:The Brain tissue lysate of Mouse(40ug) Lane4:The Brain tissue lysate of Rat(40ug)



Immunohistochemistry (IHC) analyzes of RPL27A (V140) pAb in paraffin-embedded human colorectal carcinoma tissue at 1:50.