

## Product datasheet for **TA392824**

### MRPL15 Rabbit Polyclonal Antibody

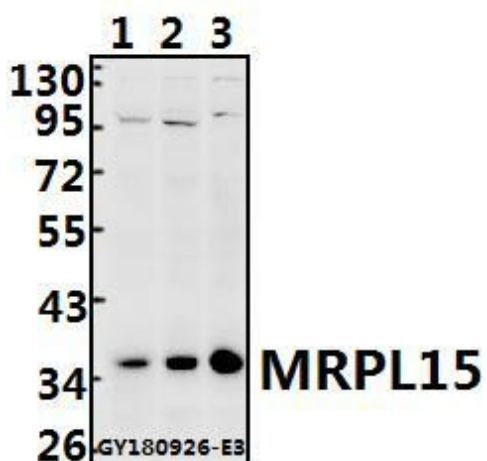
#### Product data:

Product Type:	Primary Antibodies
Applications:	WB
Recommended Dilution:	WB: 1:500~1:1000
Reactivity:	Human
Host:	Rabbit
Isotype:	IgG
Clonality:	Polyclonal
Immunogen:	Synthetic peptide, corresponding Human MRPL15.
Specificity:	MRPL15 polyclonal antibody detects endogenous levels of MRPL15 protein.
Formulation:	Rabbit IgG, 1mg/ml in PBS with 0.02% sodium azide, 50% glycerol, pH7.2
Concentration:	1mg/ml
Conjugation:	Unconjugated
Storage:	Store at 4°C short term. Aliquot and store at -20°C long term. Avoid freeze-thaw cycles.
Stability:	1 year
Predicted Protein Size:	~ 35 kDa
Gene Name:	mitochondrial ribosomal protein L15
Database Link:	<a href="#">Entrez Gene 29088 Human Q9P015</a>
Background:	MRPL15 is encoded by nuclear genes and helps in protein synthesis within the mitochondrion. A large number of SNPs genotyped in genome-wide association studies poses a significant computational challenge in the identification of gene-gene interactions.
Synonyms:	39S ribosomal protein L15, mitochondrial; HSPC145; L15mt; Mitochondrial large ribosomal subunit protein uL15m; MRP-L15; MRPL15
Note:	For research use only, not for use in diagnostic procedure.



[View online »](#)

## Product images:



Western blot (WB) analysis of MRPL15 polyclonal antibody at 1:500 dilution Lane1:SGC7901 whole cell lysate(40ug) Lane2:HCT116 whole cell lysate(40ug) Lane3:HEK293T whole cell lysate(40ug)