

## Product datasheet for TA392821M

### XRN2 Rabbit Polyclonal Antibody

#### Product data:

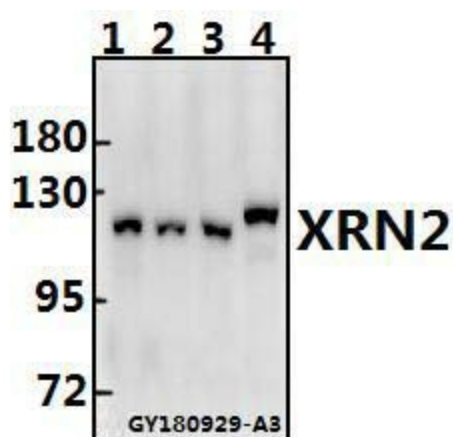
Product Type:	Primary Antibodies
Applications:	WB
Recommended Dilution:	WB: 1:500~1:1000
Reactivity:	Human, Mouse, Rat
Host:	Rabbit
Isotype:	IgG
Clonality:	Polyclonal
Immunogen:	Synthetic peptide, corresponding Human XRN2.
Specificity:	XRN2 polyclonal antibody detects endogenous levels of XRN2 protein.
Formulation:	Rabbit IgG, 1mg/ml in PBS with 0.02% sodium azide, 50% glycerol, pH7.2
Concentration:	1mg/ml
Conjugation:	Unconjugated
Storage:	Store at 4°C short term. Aliquot and store at -20°C long term. Avoid freeze-thaw cycles.
Stability:	1 year
Predicted Protein Size:	~ 110 kDa
Gene Name:	5'-3' exoribonuclease 2
Database Link:	<a href="#">Entrez Gene 22803 Human Q9H0D6</a>
Background:	Degradation of mRNA is a critical aspect of gene expression that occurs via the exoribonuclease. Exoribonuclease 2 (XRN2) is the human homolog of the <i>Saccharomyces cerevisiae</i> RAT1, which functions as a nuclear 5' to 3' exoribonuclease and is essential for mRNA turnover and cell viability. XRN2 also processes rRNAs and small nucleolar RNAs (snoRNAs) in the nucleus. XRN2 moves along with RNA polymerase II and gains access to the nascent RNA transcript after the endonucleolytic cleavage at the poly(A) site or at a second cotranscriptional cleavage site (CoTC). CoTC is an autocatalytic RNA structure that undergoes rapid self-cleavage and acts as a precursor to termination by presenting a free RNA 5' end to be recognized by XRN2. XRN2 then travels in a 5'-3' direction like a guided torpedo and facilitates the dissociation of the RNA polymerase elongation complex.


[View online »](#)

**Synonyms:** 5'-3' exoribonuclease 2; DHM1-like protein; DHP protein; XRN2

**Note:** For research use only, not for use in diagnostic procedure.

**Product images:**



Western blot (WB) analysis of XRN2 polyclonal antibody at 1:500 dilution Lane1:PC3 whole cell lysate(20ug) Lane2:A2780 whole cell lysate(20ug) Lane3:SK-OVCAR3 whole cell lysate(40ug) Lane4:CT26 whole cell lysate(40ug)