

## Product datasheet for TA392819S

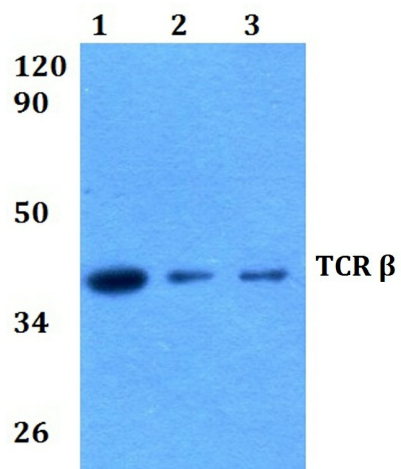
### Rabbit Polyclonal Antibody

#### Product data:

Product Type:	Primary Antibodies
Applications:	WB
Recommended Dilution:	WB: 1:500~1:1000
Reactivity:	Human, Mouse, Rat
Host:	Rabbit
Isotype:	IgG
Clonality:	Polyclonal
Immunogen:	Synthetic peptide, corresponding to amino acids 81-130 of Human TCR $\beta$ .
Specificity:	TCR $\beta$ (K115) polyclonal antibody detects endogenous levels of TCR $\beta$ protein.
Formulation:	Rabbit IgG, 1mg/ml in PBS with 0.02% sodium azide, 50% glycerol, pH7.2
Concentration:	1mg/ml
Conjugation:	Unconjugated
Storage:	Store at 4°C short term. Aliquot and store at -20°C long term. Avoid freeze-thaw cycles.
Stability:	1 year
Predicted Protein Size:	~ 19 kDa
Database Link:	<a href="#">P01850</a>
Background:	TCR (T cell antigen receptor) recognizes foreign antigens and translates such recognition events into intracellular signals that elicit a change in the cell from a dormant to an activated state. TCR is a heterodimer composed of either alpha and beta or gamma and delta chains. The vast majority of circulating T cells (95%) express the alpha/beta heterodimer while roughly 2-5% express the gamma/delta heterodimer. CD3 chains and the CD4 or CD8 coreceptors are also required for efficient signal transduction through the TCR.
Synonyms:	T-cell receptor beta-1 chain C region; TRBC1
Note:	For research use only, not for use in diagnostic procedure.

[View online »](#)

## Product images:



Western blot (WB) analysis of TCR  $\beta$  (K115) pAb at 1:500 dilution Lane1:H1792 whole cell lysate(40ug) Lane2:Hela whole cell lysate(40ug) Lane3:H9C2 whole cell lysate(40ug) Lane4:3T3-L1 whole cell lysate(40ug)