

## Product datasheet for **TA392818**

### Synphilin 1 (SNCAIP) Rabbit Polyclonal Antibody

#### Product data:

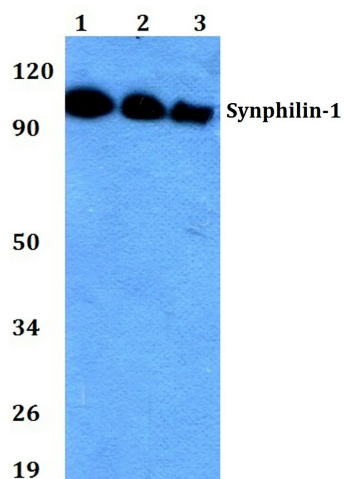
Product Type:	Primary Antibodies
Applications:	WB
Recommended Dilution:	WB: 1:500~1:1000 IHC: 1:50~1:200
Reactivity:	Human, Mouse, Rat
Host:	Rabbit
Isotype:	IgG
Clonality:	Polyclonal
Immunogen:	Synthetic peptide, corresponding to amino acids 815-867 of Human Synphilin-1.
Specificity:	Synphilin-1 (R846) polyclonal antibody detects endogenous levels of Synphilin-1 protein.
Formulation:	Rabbit IgG, 1mg/ml in PBS with 0.02% sodium azide, 50% glycerol, pH7.2
Concentration:	1mg/ml
Conjugation:	Unconjugated
Storage:	Store at 4°C short term. Aliquot and store at -20°C long term. Avoid freeze-thaw cycles.
Stability:	1 year
Predicted Protein Size:	~ 100 kDa
Gene Name:	synuclein alpha interacting protein
Database Link:	<a href="#">Entrez Gene 9627 Human Q9Y6H5</a>
Background:	Synphilin-1 ( $\alpha$ -synuclein interacting protein, SNCAIP) is a 919 amino acid protein that associates with $\alpha$ synuclein and promotes the formation of cytosolic inclusions in neuronal cells. The synuclein family members, including $\alpha$ -synuclein and $\beta$ -synuclein, are predominantly expressed in the brain, where they influence synaptic regulation and neuronal plasticity. Synphilin-1 contains modular protein domains, such as ankyrin-like repeats and a coiled-coil domain. While both $\alpha$ -synuclein and synphilin-1 are coexpressed in Lewy bodies of patients with Parkinson's disease, only mutations in the gene for $\alpha$ -synuclein have been determined to confer pathogenicity.
Synonyms:	Alpha-synuclein-interacting protein; SNCAIP; Sph1; Synphilin-1



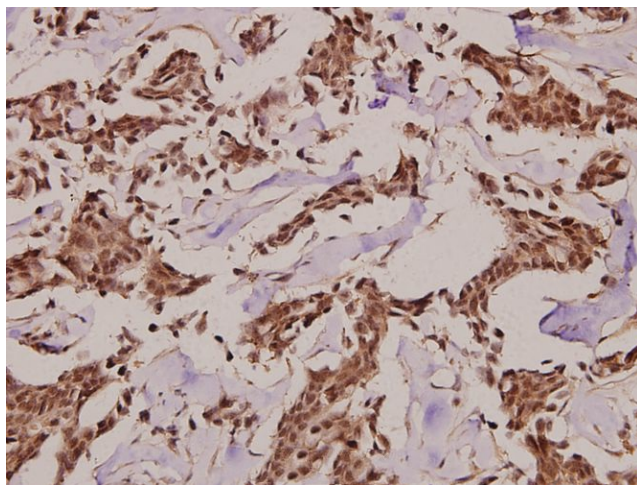
[View online »](#)

Note: For research use only, not for use in diagnostic procedure.

### Product images:



Western blot (WB) analysis of Synphilin-1 (R846) pAb at 1:500 dilution Lane1:3T3-L1 whole cell lysate(40ug) Lane2:C6 whole cell lysate(40ug) Lane3:Hela whole cell lysate(40ug) Lane4:HEK293T whole cell lysate(40ug)



Immunohistochemistry (IHC) analyzes of Synphilin-1 (R846) pAb in paraffin-embedded human breast carcinoma tissue at 1:100.