

## Product datasheet for **TA392815S**

### CHRNA1 Rabbit Polyclonal Antibody

#### Product data:

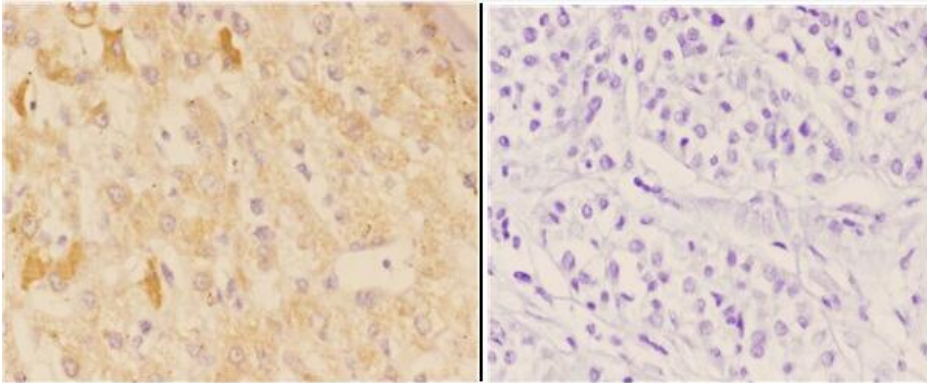
Product Type:	Primary Antibodies
Applications:	WB
Recommended Dilution:	WB: 1:500~1:1000 IHC: 1:50~1:200
Reactivity:	Human, Mouse, Rat
Host:	Rabbit
Isotype:	IgG
Clonality:	Polyclonal
Immunogen:	Synthetic peptide, corresponding to amino acids 181-230 of Human AChR $\alpha$ 1.
Specificity:	AChR $\alpha$ 1 (E217) polyclonal antibody detects endogenous levels of AChR $\alpha$ 1 protein.
Formulation:	Rabbit IgG, 1mg/ml in PBS with 0.02% sodium azide, 50% glycerol, pH7.2
Concentration:	1mg/ml
Conjugation:	Unconjugated
Storage:	Store at 4°C short term. Aliquot and store at -20°C long term. Avoid freeze-thaw cycles.
Stability:	1 year
Predicted Protein Size:	~ 55 kDa
Gene Name:	cholinergic receptor nicotinic alpha 1 subunit
Database Link:	<a href="#">Entrez Gene 1134 Human P02708</a>
Background:	Nicotinic acetylcholine receptors(AChRs) are found at the postsynaptic membrane of the neuromuscular junction and bind acetylcholine molecules, allowing ions to move through the pore. Glutamate receptors are found in the postsynaptic membrane of cells in the central nervous system. AChR $\alpha$ 1, also known as ACHRD, CHRNA, CMS2A, FCCMS, SCCMS or CHRNA1, is a 482 amino acid multi-pass membrane protein that exists as two alternatively spliced isoforms, which are expressed in different tissues. Isoform 1 is only expressed in skeletal muscle whereas isoform 2 is constitutively expressed in skeletal muscle, brain, heart, kidney, liver, lung and thymus.
Synonyms:	Acetylcholine receptor subunit alpha; ACHRA; ACHRD; Acra; CHNRA; CHRNA1; CMS2A; FCCMS, SCCMS



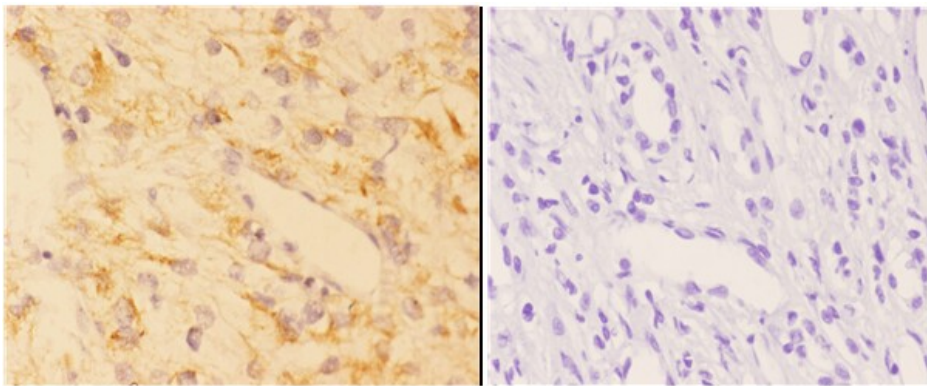
[View online »](#)

Note: For research use only, not for use in diagnostic procedure.

### Product images:



Immunohistochemistry (IHC) analyzes of AChR $\alpha$ 1 (E217) pAb bin paraffin-embedded human liver carcinoma tissue at 1:50, showing membrnae and cytoplasmic staining. Negative control (the right) Using PBS instead of primary antibody, secondary antibody is Goat Anti-Rabbit IgG-biotin followed by avidin-peroxidase.



Immunohistochemistry (IHC) analyzes of AChR $\alpha$ 1 (E217) pAb bin paraffin-embedded human kidney carcinoma tissue at 1:50, showing membrnae and cytoplasmic staining. Negative control (the right) Using PBS instead of primary antibody, secondary antibody is Goat Anti-Rabbit IgG-biotin followed by avidin-peroxidase.

BS2850  
Lot CJ36131