

Product datasheet for **TA392814**

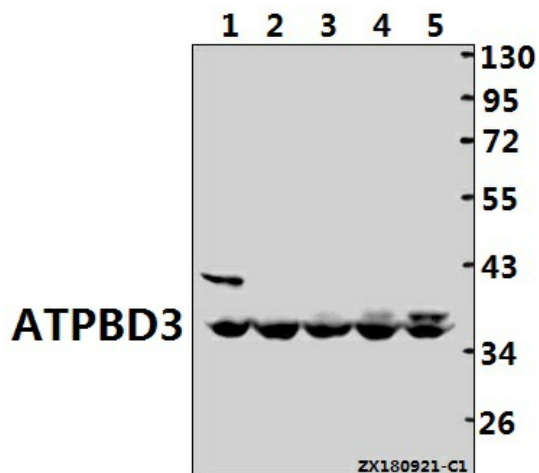
ATPBD3 (CTU1) Rabbit Polyclonal Antibody

Product data:

Product Type:	Primary Antibodies
Applications:	WB
Recommended Dilution:	WB: 1:500~1:1000
Reactivity:	Human, Mouse, Rat
Host:	Rabbit
Isotype:	IgG
Clonality:	Polyclonal
Immunogen:	Synthetic peptide, corresponding to amino acids 288-248 of Human ATPBD3.
Specificity:	ATPBD3 (G318) polyclonal antibody detects endogenous levels of ATPBD3 protein.
Formulation:	Rabbit IgG, 1mg/ml in PBS with 0.02% sodium azide, 50% glycerol, pH7.2
Concentration:	1mg/ml
Conjugation:	Unconjugated
Storage:	Store at 4°C short term. Aliquot and store at -20°C long term. Avoid freeze-thaw cycles.
Stability:	1 year
Predicted Protein Size:	~ 36 kDa
Gene Name:	cytosolic thiouridylase subunit 1
Database Link:	Entrez Gene 90353 Human Q7Z7A3
Background:	Cytoplasmic tRNA 2-thiolation protein 1, plays a central role in 2-thiolation of mcm5S2U at tRNA wobble positions of tRNA(Lys), tRNA(Glu) and tRNA(Gln). Directly binds tRNAs and probably acts by catalyzing adenylation of tRNAs, an intermediate required for 2-thiolation. It is unclear whether it acts as a sulfurtransferase that transfers sulfur from thiocarboxylated URM1 onto the uridine of tRNAs at wobble position.
Synonyms:	ATPBD3; ATphospho-binding domain-containing protein 3; Cancer-associated gene protein; CTU1; Cytoplasmic tRNA 2-thiolation protein 1; Cytoplasmic tRNA adenylyltransferase 1; NCS6
Note:	For research use only, not for use in diagnostic procedure.



[View online »](#)

Product images:


Western blot (WB) analysis of ATPBD3 (G318) polyclonal antibody at 1:500 dilution Lane1:CT26 whole cell lysate(40ug) Lane2:PC12 whole cell lysate(40ug) Lane3:A375 whole cell lysate(40ug) Lane4:HEK293T whole cell lysate(40ug) Lane5:HCT116 whole cell lysate(40ug)