

Product datasheet for **TA392813S**

PRP19 (PRPF19) Rabbit Polyclonal Antibody

Product data:

Product Type:	Primary Antibodies
Applications:	WB
Recommended Dilution:	WB: 1:500~1:1000
Reactivity:	Human, Mouse, Rat
Host:	Rabbit
Isotype:	IgG
Clonality:	Polyclonal
Immunogen:	Synthetic peptide, corresponding Human PRPF19.
Specificity:	PRPF19 polyclonal antibody detects endogenous levels of PRPF19 protein.
Formulation:	Rabbit IgG, 1mg/ml in PBS with 0.02% sodium azide, 50% glycerol, pH7.2
Concentration:	1mg/ml
Conjugation:	Unconjugated
Storage:	Store at 4°C short term. Aliquot and store at -20°C long term. Avoid freeze-thaw cycles.
Stability:	1 year
Predicted Protein Size:	~ 55 kDa
Gene Name:	pre-mRNA processing factor 19
Database Link:	Entrez Gene 27339 Human Q9UMS4
Background:	The spliceosome, the 0gigantic molecular machine that performs pre-mRNA splicing in eukaryotes, contains over 200 different proteins and five RNA molecules (U1, U2, U4, U5 and U6). Pre-mRNA splicing is essential to remove internal non-coding regions of pre-mRNA (introns) and to join the remaining segments (exons) into mRNA before translation. The PRP19-associated complex is required for stable association of U5 and U6 with the spliceosome after U4 is released. Changes within the spliceosome upon binding of the PRP19-associated complex include remodeling of the U6/5' splice site interaction and destabilization of Lsm proteins to allow further interaction of U6 with the intron sequence.



[View online »](#)

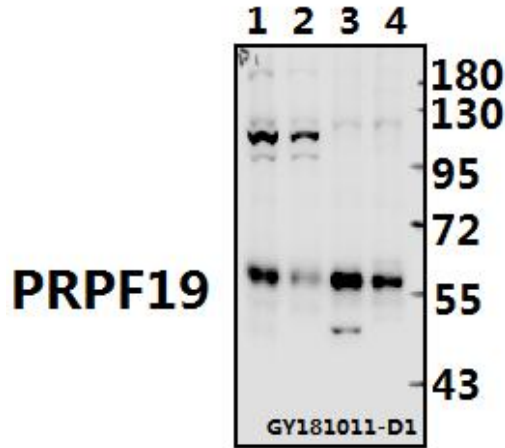
Synonyms:

hPso4; NMP200; Nuclear matrix protein 200; Pre-mRNA-processing factor 19; PRP19; PRP19/PSO4 homolog; PRPF19I; RING-type E3 ubiquitin transferase PRP19; Senescence evasion factor; SNEV

Note:

For research use only, not for use in diagnostic procedure.

Product images:



Western blot (WB) analysis of PRPF19 polyclonal antibody at 1:500 dilution Lane1:The Brain tissue lysate of Rat(20ug) Lane2:The Brain tissue lysate of Mouse(20ug) Lane3:MCF-7 whole cell lysate(10ug) Lane4:Hela whole cell lysate(10ug)