

## Product datasheet for TA392812S

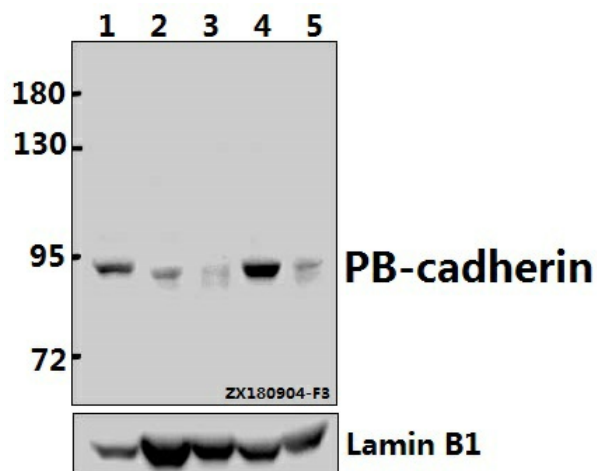
### Cadherin 22 (CDH22) Rabbit Polyclonal Antibody

#### Product data:

Product Type:	Primary Antibodies
Applications:	WB
Recommended Dilution:	WB: 1:500~1:1000
Reactivity:	Human
Host:	Rabbit
Isotype:	IgG
Clonality:	Polyclonal
Immunogen:	Synthetic peptide, corresponding to amino acids 104-164 of Human PB-cadherin.
Specificity:	PB-cadherin (T134) pAb detects endogenous levels of PB-cadherin protein.
Formulation:	Rabbit IgG, 1mg/ml in PBS with 0.02% sodium azide, 50% glycerol, pH7.2
Concentration:	1mg/ml
Conjugation:	Unconjugated
Storage:	Store at 4°C short term. Aliquot and store at -20°C long term. Avoid freeze-thaw cycles.
Stability:	1 year
Predicted Protein Size:	~ 89 kDa
Gene Name:	cadherin 22
Database Link:	<a href="#">Entrez Gene 64405 Human Q9UJ99</a>
Background:	Cadherins are calcium-dependent cell adhesion proteins. They preferentially interact with themselves in a homophilic manner in connecting cells; cadherins may thus contribute to the sorting of heterogeneous cell types. PB-cadherins may have a role in the morphological organization of pituitary gland and brain tissues.
Synonyms:	C20orf25; Cadherin-22; CDH22; PB-cadherin; Pituitary and brain cadherin
Note:	For research use only, not for use in diagnostic procedure.

[View online »](#)

Product images:



Western blot (WB) analysis of PB-cadherin (T134) pAb at 1:500 dilution Lane1:Panc1 whole cell lysate(40ug) Lane2:HEK293T whole cell lysate(40ug) Lane3:EC9706 whole cell lysate(40ug) Lane4:A2780 whole cell lysate(40ug) Lane5:SGC7901 whole cell lysate(40ug)