

Product datasheet for **TA392812M**

Cadherin 22 (CDH22) Rabbit Polyclonal Antibody

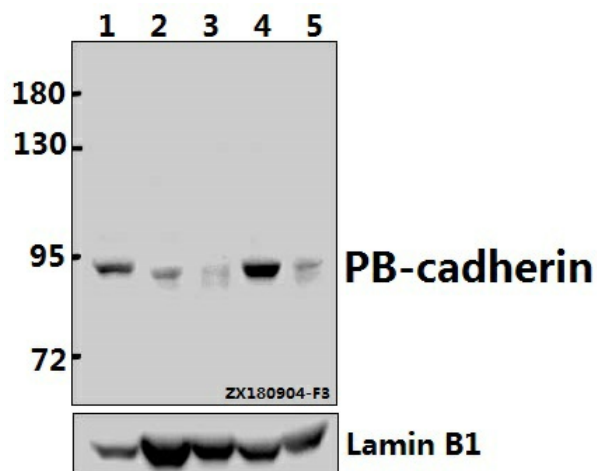
Product data:

| | |
|-------------------------|---|
| Product Type: | Primary Antibodies |
| Applications: | WB |
| Recommended Dilution: | WB: 1:500~1:1000 |
| Reactivity: | Human |
| Host: | Rabbit |
| Isotype: | IgG |
| Clonality: | Polyclonal |
| Immunogen: | Synthetic peptide, corresponding to amino acids 104-164 of Human PB-cadherin. |
| Specificity: | PB-cadherin (T134) pAb detects endogenous levels of PB-cadherin protein. |
| Formulation: | Rabbit IgG, 1mg/ml in PBS with 0.02% sodium azide, 50% glycerol, pH7.2 |
| Concentration: | 1mg/ml |
| Conjugation: | Unconjugated |
| Storage: | Store at 4°C short term. Aliquot and store at -20°C long term. Avoid freeze-thaw cycles. |
| Stability: | 1 year |
| Predicted Protein Size: | ~ 89 kDa |
| Gene Name: | cadherin 22 |
| Database Link: | Entrez Gene 64405 Human Q9UJ99 |
| Background: | Cadherins are calcium-dependent cell adhesion proteins. They preferentially interact with themselves in a homophilic manner in connecting cells; cadherins may thus contribute to the sorting of heterogeneous cell types. PB-cadherins may have a role in the morphological organization of pituitary gland and brain tissues. |
| Synonyms: | C20orf25; Cadherin-22; CDH22; PB-cadherin; Pituitary and brain cadherin |
| Note: | For research use only, not for use in diagnostic procedure. |



[View online »](#)

Product images:



Western blot (WB) analysis of PB-cadherin (T134) pAb at 1:500 dilution Lane1:Panc1 whole cell lysate(40ug) Lane2:HEK293T whole cell lysate(40ug) Lane3:EC9706 whole cell lysate(40ug) Lane4:A2780 whole cell lysate(40ug) Lane5:SGC7901 whole cell lysate(40ug)