

Product datasheet for **TA392811S**

spindlin 1 (SPIN1) Rabbit Polyclonal Antibody

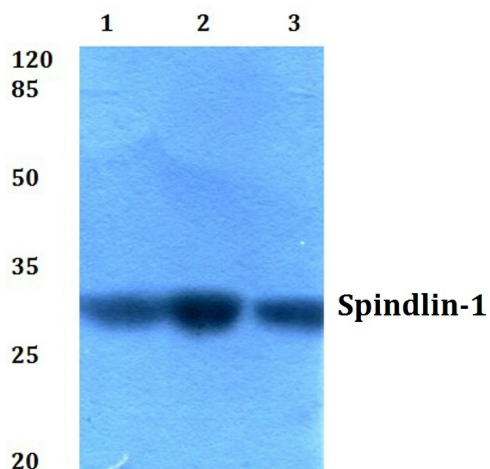
Product data:

Product Type:	Primary Antibodies
Applications:	WB
Recommended Dilution:	WB: 1:500~1:1000 IHC: 1:50~1:200
Reactivity:	Human, Mouse, Rat
Host:	Rabbit
Isotype:	IgG
Clonality:	Polyclonal
Immunogen:	Synthetic peptide, corresponding to amino acids 110-156 of Human Spindlin-1.
Specificity:	Spindlin-1 (H139) polyclonal antibody detects endogenous levels of Spindlin-1 protein.
Formulation:	Rabbit IgG, 1mg/ml in PBS with 0.02% sodium azide, 50% glycerol, pH7.2
Concentration:	1mg/ml
Conjugation:	Unconjugated
Storage:	Store at 4°C short term. Aliquot and store at -20°C long term. Avoid freeze-thaw cycles.
Stability:	1 year
Predicted Protein Size:	~ 30 kDa
Gene Name:	spindlin 1
Database Link:	Entrez Gene 10927 Human Q9Y657
Background:	SPIN1 (spindlin 1), also known as SPIN or ovarian cancer-related protein (OCR), is a 262 amino acid nuclear protein suggested to play a role in regulation of the cell-cycle during the transition from gamete to embryo. A member of the SPIN/STSY family, SPIN1 localizes to interphase nucleus and mitotic chromosomes, and is modified by phosphorylation in a cell-cycle-dependent fashion. A meiotic spindle-binding protein, SPIN1 overexpression has been shown to cause defects in mitotic spindles, thereby resulting in chromosome instability and potential tumorigenesis.
Synonyms:	OCR; Ovarian cancer-related protein; SPIN; SPIN1; Spin1; Spindlin 1
Note:	For research use only, not for use in diagnostic procedure.

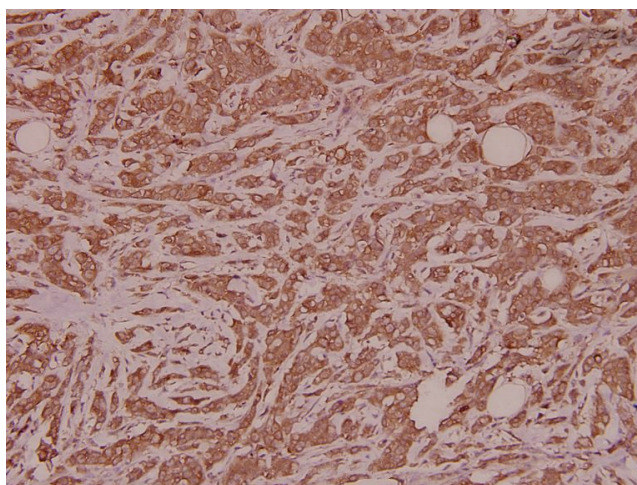


[View online »](#)

Product images:



Western blot (WB) analysis of Spindlin-1 (H139) pAb at 1:500 dilution Lane1:SK-OVCAR3 whole cell lysate(40ug) Lane2:SGC7901 whole cell lysate(40ug) Lane3:The Ovarian tissue lysate of Rat(40ug) Lane4:The Testis tissue lysate of Mouse(40ug)



Immunohistochemistry (IHC) analyzes of Spindlin-1 (H139) pAb in paraffin-embedded human breast carcinoma tissue at 1:100.