

## Product datasheet for **TA392809S**

### HOXD12 Rabbit Polyclonal Antibody

#### Product data:

Product Type:	Primary Antibodies
Applications:	WB
Recommended Dilution:	WB: 1:500~1:1000 IHC: 1:50~1:200
Reactivity:	Human, Mouse
Host:	Rabbit
Isotype:	IgG
Clonality:	Polyclonal
Immunogen:	Synthetic peptide, corresponding to amino acids 200-250 of Human HoxD12.
Specificity:	HoxD12 (E230) polyclonal antibody detects endogenous levels of HoxD12 protein.
Formulation:	Rabbit IgG, 1mg/ml in PBS with 0.02% sodium azide, 50% glycerol, pH7.2
Concentration:	1mg/ml
Conjugation:	Unconjugated
Storage:	Store at 4°C short term. Aliquot and store at -20°C long term. Avoid freeze-thaw cycles.
Stability:	1 year
Predicted Protein Size:	~ 30 kDa
Gene Name:	homeobox D12
Database Link:	<a href="#">Entrez Gene 3238 Human P35452</a>

**Background:** The Hox proteins are a family of transcription factors that play a role in development and cellular differentiation by regulating downstream target genes. Specifically, the Hox proteins direct DNA-protein and protein-protein interactions that assist in determining the morphologic features associated with the anterior-posterior body axis. Hox proteins are involved in controlling axial patterning, leukemias and hereditary malformations. HoxD12 (homeobox D12), also known as HOX4H, is a 275 amino acid protein that localizes to the nucleus and contains one homeobox DNA-binding domain. One of several members of the homeobox superfamily, HoxD12 functions as a sequencespecific transcription factor that is important for the correct positioning of developing limb buds on the anterior-posterior axis.

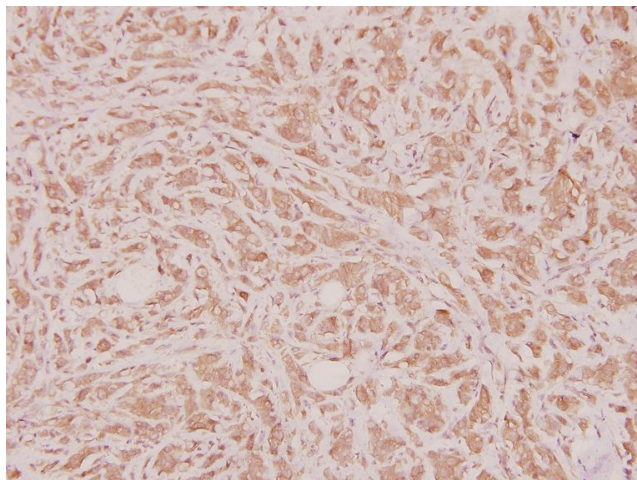
**Synonyms:** Homeobox protein Hox-4H; Homeobox protein Hox-D12; HOX4H; HOXD12



[View online »](#)

**Note:** For research use only, not for use in diagnostic procedure.

**Product images:**



Immunohistochemistry (IHC) analyzes of HoxD12 (E230) pAb in paraffin-embedded human breast carcinoma tissue at 1:100.