

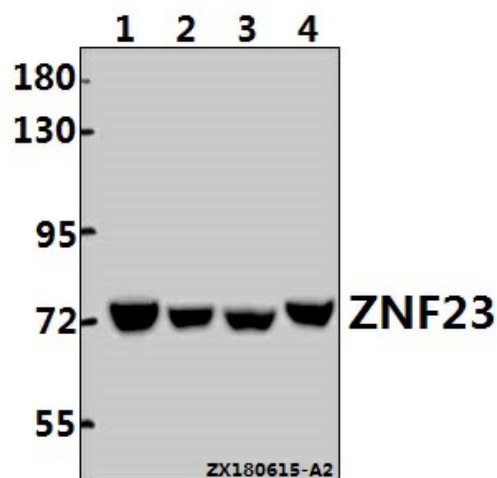
## Product datasheet for **TA392808S**

### ZNF23 Rabbit Polyclonal Antibody

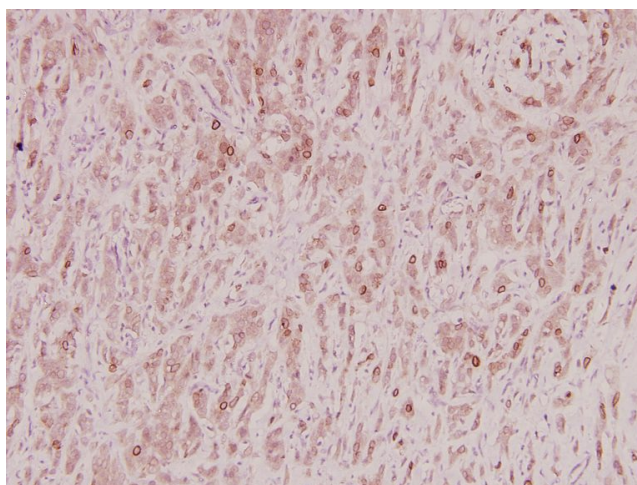
#### Product data:

Product Type:	Primary Antibodies
Applications:	WB
Recommended Dilution:	WB: 1:500~1:1000 IHC: 1:50~1:200
Reactivity:	Human, Mouse, Rat
Host:	Rabbit
Isotype:	IgG
Clonality:	Polyclonal
Immunogen:	Synthetic peptide, corresponding to amino acids 150-200 of Human ZNF23.
Specificity:	ZNF23 (Q185) polyclonal antibody detects endogenous levels of ZNF23 protein.
Formulation:	Rabbit IgG, 1mg/ml in PBS with 0.02% sodium azide, 50% glycerol, pH7.2
Concentration:	1mg/ml
Conjugation:	Unconjugated
Storage:	Store at 4°C short term. Aliquot and store at -20°C long term. Avoid freeze-thaw cycles.
Stability:	1 year
Predicted Protein Size:	~ 73 kDa
Gene Name:	zinc finger protein 23
Database Link:	<a href="#">Entrez Gene 7571 Human P17027</a>
Background:	ZNF23 May be involved in transcriptional regulation. May have a role in embryonic development. Belongs to the krueppel C2H2-type zinc-finger protein family
Synonyms:	Zinc finger protein 23
Note:	For research use only, not for use in diagnostic procedure.

[View online »](#)

**Product images:**


Western blot (WB) analysis of ZNF23 (Q185) pAb at 1:500 dilution Lane1:A2780 whole cell lysate(40ug) Lane2:The Testis tissue lysate of Mouse(40ug) Lane3:Hela whole cell lysate(40ug) Lane4:The Testis tissue lysate of Rat(40ug)



Immunohistochemistry (IHC) analyzes of ZNF23 (Q185) pAb in paraffin-embedded human breast carcinoma tissue at 1:100.