

## Product datasheet for **TA392805M**

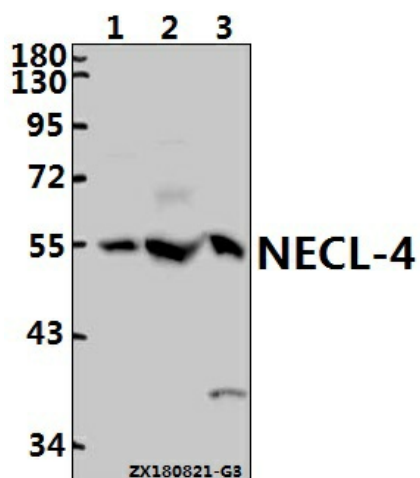
### Cell adhesion molecule 4 (CADM4) Rabbit Polyclonal Antibody

#### Product data:

Product Type:	Primary Antibodies
Applications:	WB
Recommended Dilution:	WB: 1:1000~1:2000
Reactivity:	Human
Host:	Rabbit
Isotype:	IgG
Clonality:	Polyclonal
Immunogen:	Synthetic peptide, corresponding to amino acids 299-359 of Human Aven.
Specificity:	NECL-4G376) pAb detects endogenous levels of NECL-4 protein.
Formulation:	Rabbit IgG, 1mg/ml in PBS with 0.02% sodium azide, 50% glycerol, pH7.2
Concentration:	1mg/ml
Conjugation:	Unconjugated
Storage:	Store at 4°C short term. Aliquot and store at -20°C long term. Avoid freeze-thaw cycles.
Stability:	1 year
Predicted Protein Size:	~ 50 kDa
Gene Name:	cell adhesion molecule 4
Database Link:	<a href="#">Entrez Gene 199731 Human Q8NFZ8</a>
Background:	Cell adhesion molecule 4, involved in the cell-cell adhesion. Has calcium- and magnesium-independent cell-cell adhesion activity. May have tumor-suppressor activity.
Synonyms:	AVEN; Cell death regulator Aven
Note:	For research use only, not for use in diagnostic procedure.

[View online »](#)

Product images:



Western blot (WB) analysis of NECL-4 (G376)  
Antibody at 1:500 dilution Lane1:PC3 whole cell  
lysate(40ug) Lane2:HEK293T whole cell  
lysate(40ug) Lane3:U-87MG whole cell  
lysate(40ug)