

## Product datasheet for **TA392802S**

### TAF15 Rabbit Polyclonal Antibody

#### Product data:

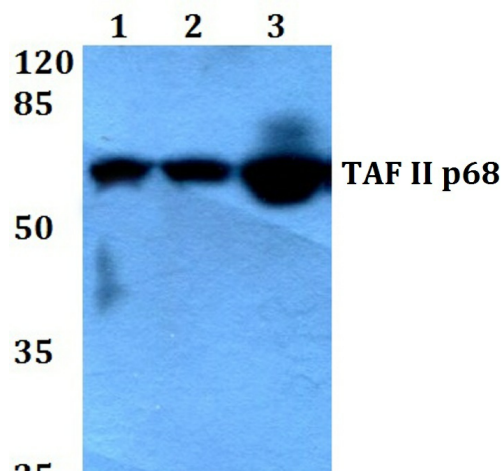
Product Type:	Primary Antibodies
Applications:	WB
Recommended Dilution:	WB: 1:500~1:1000 IHC: 1:50~1:200
Reactivity:	Human, Mouse, Rat
Host:	Rabbit
Isotype:	IgG
Clonality:	Polyclonal
Immunogen:	Synthetic peptide, corresponding to amino acids 347-398 of Human TAF II p68.
Specificity:	TAF II p68 (N380) polyclonal antibody detects endogenous levels of TAF II protein.
Formulation:	Rabbit IgG, 1mg/ml in PBS with 0.02% sodium azide, 50% glycerol, pH7.2
Concentration:	1mg/ml
Conjugation:	Unconjugated
Storage:	Store at 4°C short term. Aliquot and store at -20°C long term. Avoid freeze-thaw cycles.
Stability:	1 year
Predicted Protein Size:	~ 68 kDa
Gene Name:	TATA-box binding protein associated factor 15
Database Link:	<a href="#">Entrez Gene 8148 Human Q92804</a>
Background:	TAF II p68, also known as TAF15, RBP56 or TAF2N, is a member of the RNA polymerase II multiprotein complex and is present in certain TFIID subcomplexes. Expressed throughout the body, TAF II p68 is a single stranded RNA binding protein that shares homology with TLS (translocated in liposarcoma) and EWS (Ewing's sarcoma), both of which are proto-oncogenes. Fusion of TAF II p68 with certain transcription factors transforms it into an oncoprotein with oncogenic potential at the N-terminus. When, for example, TAF II p68 is fused with TEC (translocated in extraskeletal chondrosarcoma), the fusion pair acts as an oncoprotein in which TAF II p68 is the transactivation domain. Defects in the gene encoding TAF II p68 are associated with extraskeletal myxoid chondrosarcoma, a malignant soft tumor.


[View online »](#)

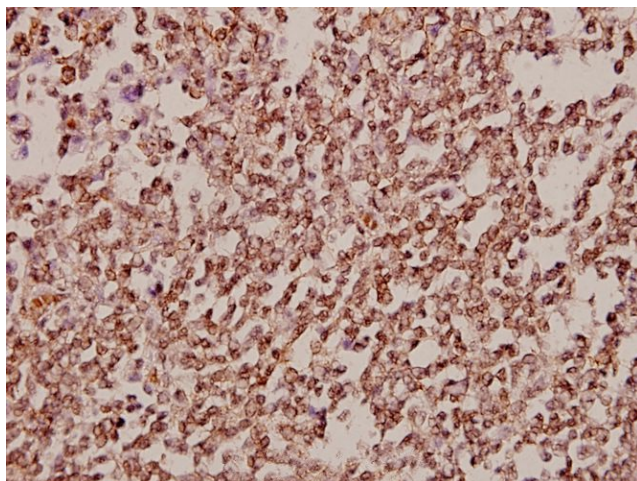
**Synonyms:** 68 kDa TATA-binding protein-associated factor; RBP56; RNA-binding protein 56; TAF(II)68; TAF2N; TAF15; TAFII68; TATA-binding protein-associated factor 2N

**Note:** For research use only, not for use in diagnostic procedure.

**Product images:**



Western blot (WB) analysis of TAF II p68 (N380) pAb at 1:500 dilution Lane1:3T3-L1 whole cell lysate(40ug) Lane2:C6 whole cell lysate(40ug) Lane3:MCF-7 whole cell lysate(40ug) Lane4:HEK293T whole cell lysate(40ug)



Immunohistochemistry (IHC) analyzes of TAF II p68 (N380) pAb in paraffin-embedded human tonsil carcinoma tissue at 1:50.