

Product datasheet for **TA392801M**

CAMKV Rabbit Polyclonal Antibody

Product data:

Product Type:	Primary Antibodies
Applications:	WB
Recommended Dilution:	WB: 1:1000~1:2000
Reactivity:	Human, Mouse, Rat
Host:	Rabbit
Isotype:	IgG
Clonality:	Polyclonal
Immunogen:	Synthetic peptide, corresponding to amino acids 186-247 of Human CaMKV.
Specificity:	CaMKV (N217) polyclonal antibody detects endogenous levels of CaMKV protein.
Formulation:	Rabbit IgG, 1mg/ml in PBS with 0.02% sodium azide, 50% glycerol, pH7.2
Concentration:	1mg/ml
Conjugation:	Unconjugated
Storage:	Store at 4°C short term. Aliquot and store at -20°C long term. Avoid freeze-thaw cycles.
Stability:	1 year
Predicted Protein Size:	~ 54 kDa
Gene Name:	CaM kinase like vesicle associated
Database Link:	Entrez Gene 79012 Human Q8NCB2

[View online »](#)

Background:

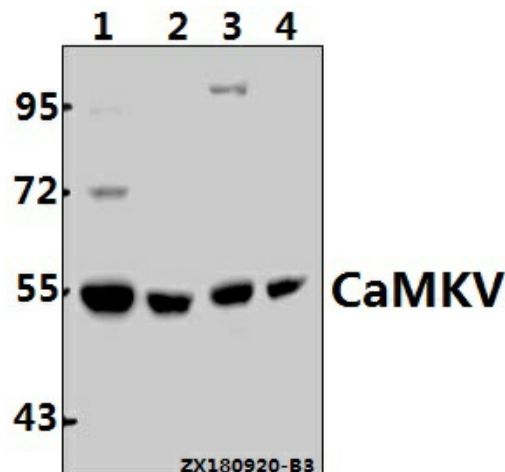
The Ca²⁺/calmodulin-dependent protein kinases (CaMKs) comprise a structurally related subfamily of serine/threonine kinases. CAMKV (CaM kinaselike vesicle-associated), also known as 1G5 or VACAMKL, is a 501 amino acid protein that localizes to cytoplasmic vesicles, as well as to the cell membrane, and contains one protein kinase domain. Although a member of the CaMK family, CaMKV is thought to be catalytically inactive, but it may play a role in vesicle function and nervous system development. Multiple isoforms of CaMKV exist due to alternative splicing events. The gene encoding CaMKV maps to human chromosome 3, which houses over 1,100 genes, including a chemokine receptor (CKR) gene cluster and a variety of human cancer-related gene loci. Key tumor suppressing genes on chromosome 3 include those that encode the apoptosis mediator RASSF1, the cell migration regulator HYAL1 and the angiogenesis suppressor SEMA3B. Marfan Syndrome, porphyria, von Hippel-Lindau syndrome, osteogenesis imperfecta and CharcotMarie-Tooth disease are a few of the numerous genetic diseases associated with chromosome 3.

Synonyms:

CaM kinase-like vesicle-associated protein; CAMKV

Note:

For research use only, not for use in diagnostic procedure.

Product images:


Western blot (WB) analysis of CaMKV (N217) polyclonal antibody at 1:1000 dilution
 Lane1:HEK293T whole cell lysate(40ug) Lane2:U-87MG whole cell lysate(40ug) Lane3:PC12 whole cell lysate(40ug) Lane4:BV2 whole cell lysate(40ug)