

## Product datasheet for **TA392800M**

### TAF5 Rabbit Polyclonal Antibody

#### Product data:

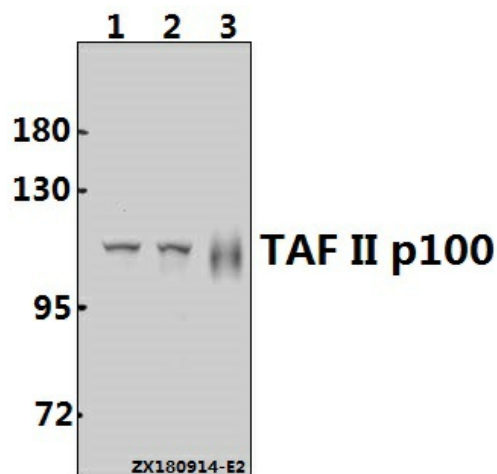
Product Type:	Primary Antibodies
Applications:	WB
Recommended Dilution:	WB: 1:500~1:1000 IHC: 1:50~1:200
Reactivity:	Human, Rat
Host:	Rabbit
Isotype:	IgG
Clonality:	Polyclonal
Immunogen:	Synthetic peptide, corresponding to amino acids 380-432 of Human TAF II p100.
Specificity:	TAF II p100 (G411) polyclonal antibody detects endogenous levels of TAF II p100 protein.
Formulation:	Rabbit IgG, 1mg/ml in PBS with 0.02% sodium azide, 50% glycerol, pH7.2
Concentration:	1mg/ml
Conjugation:	Unconjugated
Storage:	Store at 4°C short term. Aliquot and store at -20°C long term. Avoid freeze-thaw cycles.
Stability:	1 year
Predicted Protein Size:	~ 100 kDa
Gene Name:	TATA-box binding protein associated factor 5
Database Link:	<a href="#">Entrez Gene 6877 Human Q15542</a>
Background:	TFIID is a general transcription factor which initiates preinitiation complex assembly through direct interaction with the TATA promoter element. It is a multisubunit complex consisting of a small TATA-binding polypeptide and other TATA-binding protein (TBP)-associated factors (TAFs). Although native TFIID can mediate both activator-independent (basal) and activator-dependent transcription in reconstituted systems, TBP can mediate only basal transcription. TAF II p100 (TBP-associated factor II100), also known as TAF5 or TAFII100, is the third largest subunit of human TFIID. It contains six WD40 repeats at the C-terminus and has an N-terminus capable of forming a flexible dimer. TAF II p100 plays an important role in forming the scaffold that is crucial for the assembly of the TFIID complex. TAF II p100 may also be involved in the stabilization of TAF interactions.

[View online »](#)

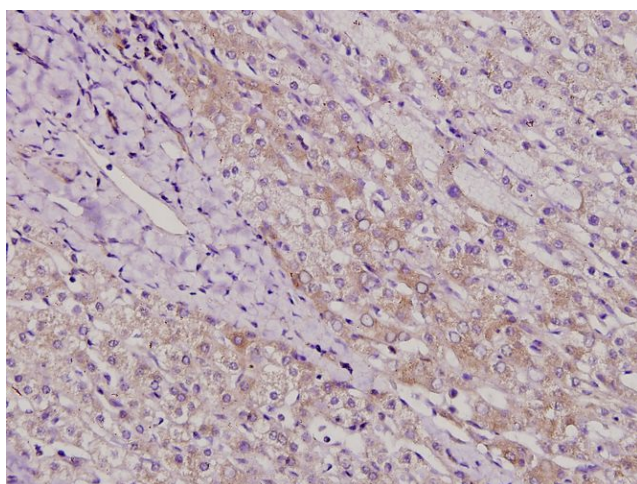
**Synonyms:** TAF(II)100; TAF2D; TAF5; TAFII-100; TAFII100; Transcription initiation factor TFIID 100 kDa subunit; Transcription initiation factor TFIID subunit 5

**Note:** For research use only, not for use in diagnostic procedure.

**Product images:**



Western blot (WB) analysis of TAF II p100 (G411) pAb at 1:500 dilution Lane1:HCT116 whole cell lysate(40ug) Lane2:A2780 whole cell lysate(40ug) Lane3:The Lung tissue lysate of Rat(20ug)



Immunohistochemistry (IHC) analyzes of TAF II p100 (G411) pAb in paraffin-embedded liver cancer tissue at 1:100.