

## Product datasheet for TA392797M

### PFKFB2 Rabbit Polyclonal Antibody

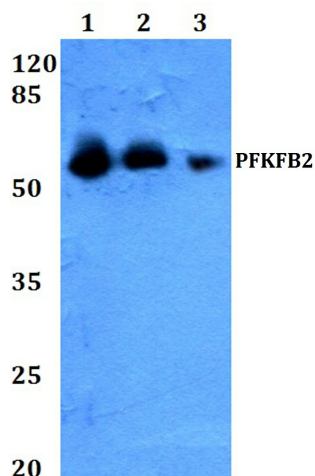
#### Product data:

Product Type:	Primary Antibodies
Applications:	WB
Recommended Dilution:	WB: 1:500~1:1000 IHC: 1:50~1:200
Reactivity:	Human, Mouse, Rat
Host:	Rabbit
Isotype:	IgG
Clonality:	Polyclonal
Immunogen:	Synthetic peptide, corresponding to amino acids 1-50 of Human PFKFB2.
Specificity:	PFKFB2 (Y14) polyclonal antibody detects endogenous levels of PFKFB2 protein.
Formulation:	Rabbit IgG, 1mg/ml in PBS with 0.02% sodium azide, 50% glycerol, pH7.2
Concentration:	1mg/ml
Conjugation:	Unconjugated
Storage:	Store at 4°C short term. Aliquot and store at -20°C long term. Avoid freeze-thaw cycles.
Stability:	1 year
Predicted Protein Size:	~ 58 kDa
Gene Name:	6-phosphofructo-2-kinase/fructose-2,6-biphosphatase 2
Database Link:	<a href="#">Entrez Gene 5208 Human O60825</a>
Background:	PFK-1 undergoes activation in the presence of elevated AMP. The most potent activator is fructose-2,6-bisphosphate, which is produced by PFK-2 from the same substrate, fructose 6-phosphate. PFK-2 is bifunctional and a key regulator for PFK-1. PFK-2 catalyzes the synthesis of fructose-2,6-bisphosphate, and contains fructose-2,6-biphosphatase activity that catalyzes the degradation of fructose-2,6-bisphosphate. PFK-2 is dimeric and isoenzymes include PFK-2 liver (PFKFB1, PFRX), PFK-2 cardiac (PFKFB2), PFK-2 placental (PFKFB3, inducible PFK-2) and PFK-2 testis (PFKFB4).
Synonyms:	6-phosphofructo-2-kinase; 6-phosphofructo-2-kinase/fructose-2,6-bisphosphatase 2; 6PF-2-K/Fru-2,6-P2ase 2; 6PF-2-K/Fru-2,6-P2ase heart-type isozyme; Fructose-2,6-bisphosphatase; PFK-2 car; PFK-2 cardiac; PFK/FBPase 2; PFKFB2

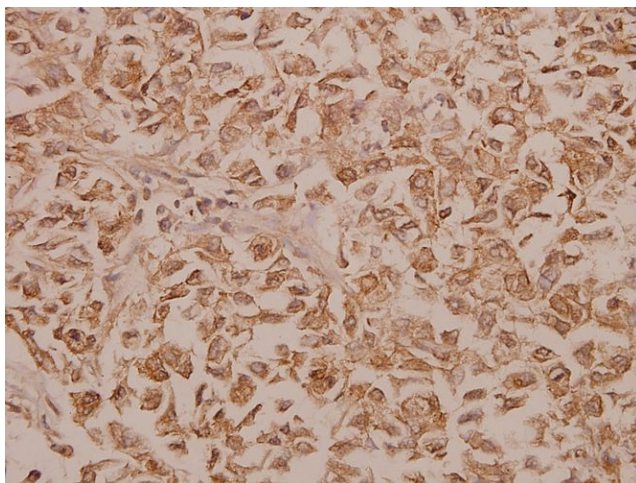

[View online »](#)

**Note:** For research use only, not for use in diagnostic procedure.

**Product images:**



Western blot (WB) analysis of PFKFB2 (Y14) pAb at 1:500 dilution Lane1:A549 whole cell lysate(40ug) Lane2:PC3 whole cell lysate(40ug) Lane3:MCF-7 whole cell lysate(40ug) Lane4:Hela whole cell lysate(40ug) Lane5:U-87MG whole cell lysate(40ug)



Immunohistochemistry (IHC) analyzes of PFKFB2 (Y14) pAb in paraffin-embedded human colorectal carcinoma tissue at 1:50.