

Product datasheet for **TA392794S**

RAD21 Rabbit Polyclonal Antibody

Product data:

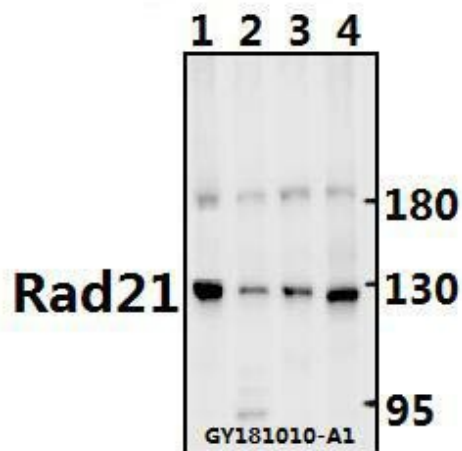
Product Type:	Primary Antibodies
Applications:	WB
Recommended Dilution:	WB: 1:500~1:1000 IHC: 1:50~1:200
Reactivity:	Human, Mouse, Rat
Host:	Rabbit
Isotype:	IgG
Clonality:	Polyclonal
Immunogen:	Synthetic peptide, corresponding to amino acids 521-570 of Human Rad21.
Specificity:	Rad21 (D548) polyclonal antibody detects endogenous levels of Rad21 protein.
Formulation:	Rabbit IgG, 1mg/ml in PBS with 0.02% sodium azide, 50% glycerol, pH7.2
Concentration:	1mg/ml
Conjugation:	Unconjugated
Storage:	Store at 4°C short term. Aliquot and store at -20°C long term. Avoid freeze-thaw cycles.
Stability:	1 year
Predicted Protein Size:	~ 130 kDa
Gene Name:	RAD21 cohesin complex component
Database Link:	Entrez Gene 5885 Human O60216
Background:	Rad21 is one of the major cohesin subunits that holds sister chromatids together until anaphase, when proteolytic cleavage by separase, a caspaselike enzyme, allows chromosomal separation. Rad21 interacts with Rec8 to form a cohesin complex that functions in sister chromatid alignment. Rad21 is also involved in the repair of double-strand breaks in DNA and is essential for mitotic growth. Rad21 undergoes a C-terminal cleavage induced by diverse stimuli right before apoptosis. The cleavage product migrates to the cytoplasm and is involved in early events in the apoptotic pathway and it amplifies the cell death signal in a positive-feedback manner.
Synonyms:	Double-strand-break repair protein rad21 homolog; hHR21; HR21; KIAA0078; Nuclear matrix protein 1; NXP-1; NXP1; RAD21; SCC1 homolog



[View online »](#)

Note: For research use only, not for use in diagnostic procedure.

Product images:



Western blot (WB) analysis of Rad21 (D548) pAb at 1:500 dilution Lane1:C6 whole cell lysate(40ug) Lane2:3T3-L1 whole cell lysate(40ug) Lane3:HeLa whole cell lysate(40ug) Lane4:HEK293T whole cell lysate(40ug)