

Product datasheet for **TA392788S**

EPS8L2 Rabbit Polyclonal Antibody

Product data:

Product Type:	Primary Antibodies
Applications:	WB
Recommended Dilution:	WB: 1:500~1:1000
Reactivity:	Human, Mouse, Rat
Host:	Rabbit
Isotype:	IgG
Clonality:	Polyclonal
Immunogen:	Synthetic peptide, corresponding to amino acids 05-60 of Human EPS8L2.
Specificity:	EPS8L2 polyclonal antibody detects endogenous levels of EPS8L2 protein.
Formulation:	Rabbit IgG, 1mg/ml in PBS with 0.02% sodium azide, 50% glycerol, pH7.2
Concentration:	1mg/ml
Conjugation:	Unconjugated
Storage:	Store at 4°C short term. Aliquot and store at -20°C long term. Avoid freeze-thaw cycles.
Stability:	1 year
Predicted Protein Size:	~ 90 kDa
Gene Name:	EPS8 like 2
Database Link:	Entrez Gene 64787 Human Q9H6S3



[View online »](#)

Background:

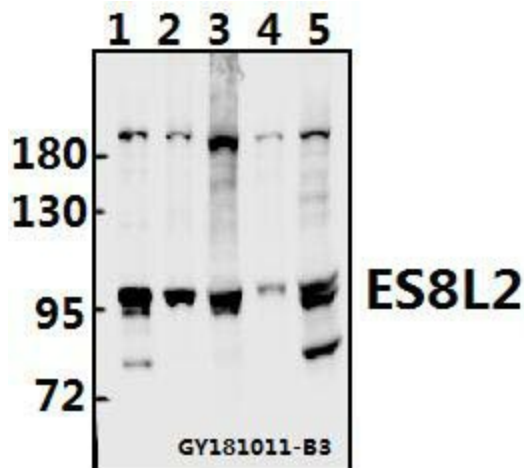
Eps8L2 (epidermal growth factor receptor kinase substrate 8-like protein 2), also known as EPS8R2 or PP13181, is a 715 amino acid protein that localizes to the cytoplasm and belongs to the Eps8 (epidermal growth factor receptor pathway substrate 8) family. Expressed in placenta and fibroblasts, Eps8L2 functions to stimulate the guanine exchange activity of Sos 1 (son of sevenless homolog 1), a protein that promotes the exchange of Ras-bound GDP for GTP. Additionally, Eps8L2 is thought to associate with Actin and, via this association, may play a role in membrane ruffling and remodeling of the Actin cytoskeleton. Through its ability to regulate protein activation and cytoskeleton dynamics, Eps8L2 may participate in cell growth and differentiation events within the cell. Eps8L2, a protein that is expressed as two isoforms due to alternative splicing, contains one PID (phosphotyrosine interaction) domain and one SH3 domain.

Synonyms:

Epidermal growth factor receptor kinase substrate 8-like protein 2; Epidermal growth factor receptor pathway substrate 8-related protein 2; EPS8-like protein 2; EPS8-related protein 2; EPS8L2; EPS8R2; PP13181

Note:

For research use only, not for use in diagnostic procedure.

Product images:

Western blot (WB) analysis of EPS8L2 (K30) polyclonal antibody at 1:500 dilution
Lane1:HCT116 whole cell lysate(10ug)
Lane2:A375 whole cell lysate(20ug) Lane3:LOVO whole cell lysate(40ug) Lane4:The Embryo tissue lysate of Mouse(20ug) Lane5:PC12 whole cell lysate(40ug)