

Product datasheet for **TA392786S**

MDA5 (IFIH1) Rabbit Polyclonal Antibody

Product data:

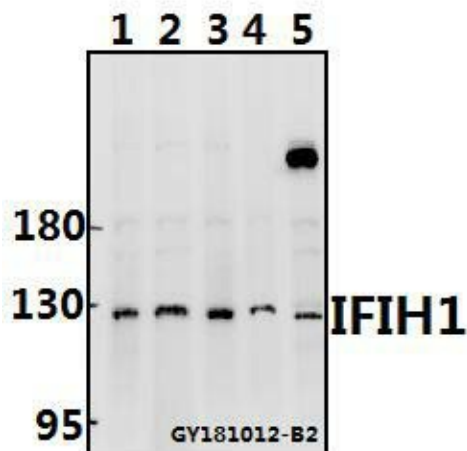
Product Type:	Primary Antibodies
Applications:	WB
Recommended Dilution:	WB: 1:500~1:1000
Reactivity:	Human, Mouse
Host:	Rabbit
Isotype:	IgG
Clonality:	Polyclonal
Immunogen:	Synthetic peptide, corresponding Human IFIH1.
Specificity:	IFIH1 polyclonal antibody detects endogenous levels of IFIH1 protein.
Formulation:	Rabbit IgG, 1mg/ml in PBS with 0.02% sodium azide, 50% glycerol, pH7.2
Concentration:	1mg/ml
Conjugation:	Unconjugated
Storage:	Store at 4°C short term. Aliquot and store at -20°C long term. Avoid freeze-thaw cycles.
Stability:	1 year
Predicted Protein Size:	~ 135 kDa
Gene Name:	interferon induced with helicase C domain 1
Database Link:	Entrez Gene 64135 Human Q9BYX4
Background:	IFIH1 (interferon induced with helicase C domain 1), also known as MDA5 (melanoma differentiation-associated protein 5), is one of a family of intracellular proteins known to recognise viral RNA and mediate the innate immune response. IFIH1 is causal in type 1 diabetes based on the protective associations of four rare variants, where the derived alleles are predicted to reduce gene expression or function.
Synonyms:	CADM-140 autoantigen; Clinically amyopathic dermatomyositis autoantigen 140 kDa; Helicard; Helicase with 2 CARD domains; IFIH1; Interferon-induced helicase C domain-containing protein 1; Interferon-induced with helicase C domain protein 1; MDA-5; MDA5; Melanoma differentiation-associated protein 5; Murabutide down-regulated protein; RH116; RIG-I-like receptor 2; RLR-2; RNA helicase-DEAD box protein 116



[View online »](#)

Note: For research use only, not for use in diagnostic procedure.

Product images:



Western blot (WB) analysis of IFIH1 polyclonal antibody at 1:500 dilution Lane1:DLD whole cell lysate(40ug) Lane2:Panc1 whole cell lysate(40ug) Lane3:HCT116 whole cell lysate(40ug) Lane4:PC3 whole cell lysate(40ug) Lane5:CT26 whole cell lysate(40ug)