

## Product datasheet for **TA392784M**

### Phosphorylase B (PHKB) Rabbit Polyclonal Antibody

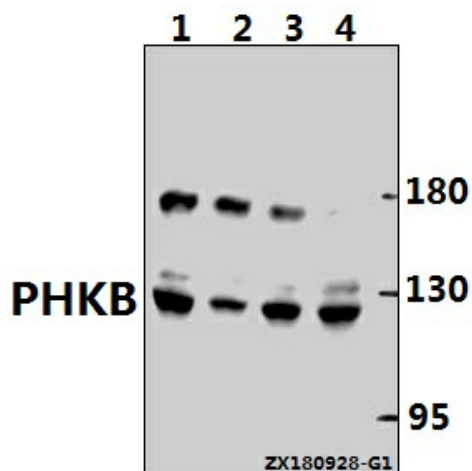
#### Product data:

Product Type:	Primary Antibodies
Applications:	WB
Recommended Dilution:	WB: 1:500~1:1000
Reactivity:	Human
Host:	Rabbit
Isotype:	IgG
Clonality:	Polyclonal
Immunogen:	Synthetic peptide, corresponding to amino acids 659-719 of Human PHKB.
Specificity:	PHKB (E689) polyclonal antibody detects endogenous levels of PHKB protein.
Formulation:	Rabbit IgG, 1mg/ml in PBS with 0.02% sodium azide, 50% glycerol, pH7.2
Concentration:	1mg/ml
Conjugation:	Unconjugated
Storage:	Store at 4°C short term. Aliquot and store at -20°C long term. Avoid freeze-thaw cycles.
Stability:	1 year
Predicted Protein Size:	~ 125 kDa
Gene Name:	phosphorylase kinase regulatory subunit beta
Database Link:	<a href="#">Entrez Gene 5257 Human Q93100</a>
Background:	Phosphorylase b kinase catalyzes the phosphorylation of serine in certain substrates, including troponin I. The beta chain acts as a regulatory unit and modulates the activity of the holoenzyme in response to phosphorylation.
Synonyms:	PHKB; Phosphorylase b kinase regulatory subunit beta; Phosphorylase kinase subunit beta
Note:	For research use only, not for use in diagnostic procedure.



[View online »](#)

## Product images:



Western blot (WB) analysis of PHKB (E689) polyclonal antibody at 1:500 dilution Lane1:MCF-7 whole cell lysate(40ug) Lane2:PC3 whole cell lysate(40ug) Lane3:A549 whole cell lysate(40ug) Lane4:HEK293T whole cell lysate(30ug)