

## Product datasheet for **TA392783S**

### FCSK Rabbit Polyclonal Antibody

#### Product data:

Product Type:	Primary Antibodies
Applications:	WB
Recommended Dilution:	WB: 1:500~1:1000
Reactivity:	Human, Mouse, Rat
Host:	Rabbit
Isotype:	IgG
Clonality:	Polyclonal
Immunogen:	Synthetic peptide, corresponding to amino acids 10-70 of Human Fucokinase.
Specificity:	Fucokinase (Q26) polyclonal antibody detects endogenous levels of Fucokinase protein.
Formulation:	Rabbit IgG, 1mg/ml in PBS with 0.02% sodium azide, 50% glycerol, pH7.2
Concentration:	1mg/ml
Conjugation:	Unconjugated
Storage:	Store at 4°C short term. Aliquot and store at -20°C long term. Avoid freeze-thaw cycles.
Stability:	1 year
Predicted Protein Size:	~ 118 kDa
Gene Name:	fucokinase
Database Link:	<a href="#">Entrez Gene 197258 Human Q8N0W3</a>



[View online »](#)

**Background:**

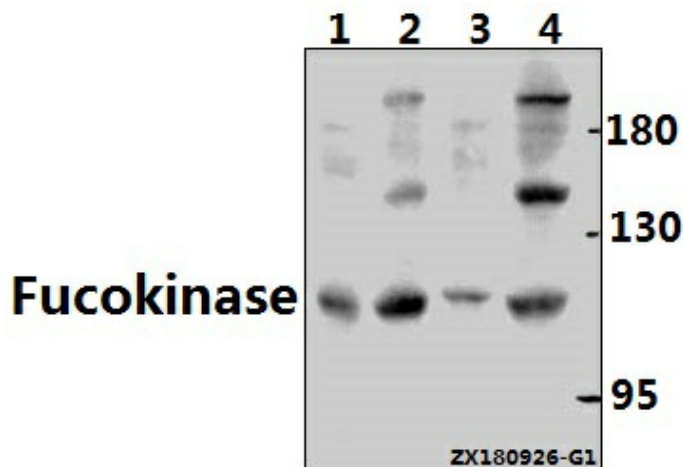
Blood group antigen recognition, metastasis and inflammation utilize fucose, a sugar found in glycoproteins and glycolipids. Fucokinase, also designated L-fucose kinase or FUK, is a 1,084 amino acid enzyme that plays a role in the salvage pathway of fucose reutilization. A member of the GHMP kinase family, Fucokinase exists as two alternative splice variants and catalyzes L-fucose phosphorylation to form  $\beta$ -L-fucose 1-phosphate. The gene encoding Fucokinase maps to human chromosome 16, which encodes over 900 genes and comprises nearly 3% of the human genome. The GAN gene is located on chromosome 16 and, with mutation, may lead to giant axonal neuropathy, a nervous system disorder characterized by increasing malfunction with growth. The rare disorder Rubinstein-Taybi syndrome is also associated with chromosome 16, as is Crohn's disease, which is a gastrointestinal inflammatory condition.

**Synonyms:**

Fucokinase; FUK; L-fucose kinase

**Note:**

For research use only, not for use in diagnostic procedure.

**Product images:**

Western blot (WB) analysis of Fucokinase (Q26) polyclonal antibody at 1:500 dilution Lane1:CT26 whole cell lysate(30ug) Lane2:PC12 whole cell lysate(40ug) Lane3:Beas-2B whole cell lysate(40ug) Lane4:HeLa whole cell lysate(40ug)