

Product datasheet for **TA392781S**

CBF (CEBPZ) Rabbit Polyclonal Antibody

Product data:

Product Type:	Primary Antibodies
Applications:	WB
Recommended Dilution:	WB: 1:500~1:1000 IHC: 1:50~1:200
Reactivity:	Human, Mouse, Rat
Host:	Rabbit
Isotype:	IgG
Clonality:	Polyclonal
Immunogen:	Synthetic peptide, corresponding to the N-terminus of Human C/EBP ζ .
Specificity:	C/EBP ζ (D24) polyclonal antibody detects endogenous levels of C/EBP ζ protein.
Formulation:	Rabbit IgG, 1mg/ml in PBS with 0.02% sodium azide, 50% glycerol, pH7.2
Concentration:	1mg/ml
Conjugation:	Unconjugated
Storage:	Store at 4°C short term. Aliquot and store at -20°C long term. Avoid freeze-thaw cycles.
Stability:	1 year
Predicted Protein Size:	~121 kDa
Gene Name:	CCAAT/enhancer binding protein zeta
Database Link:	Entrez Gene 10153 Human Q03701
Background:	C/EBP family members include C/EBP α , C/EBP β , C/EBP γ , C/EBP δ , C/EBP ϵ and C/EBP ζ , all of which are capable of forming homodimers or heterodimers with each other. C/EBP ζ , also known as CBF2, NOC1, CHOP10 (C/EBP homologous protein 10), GADD153 (growth arrest and DNA damage-inducible gene 153) or HSPCBF, is a ubiquitously expressed 1,054 amino acid protein that localizes to the nucleus and regulates transcription. More specifically, C/EBP ζ is believed to play a role regulating the expression of CRP (C-reactive protein). Unlike most C/EBP dimers, C/EBP ζ -containing dimers do not bind the classical C/EBP-binding consensus sequence. Rather, C/EBP ζ -containing dimers must associate with RBP-J κ (another transcription factor) in order to accomplish binding to the C/EBP site.

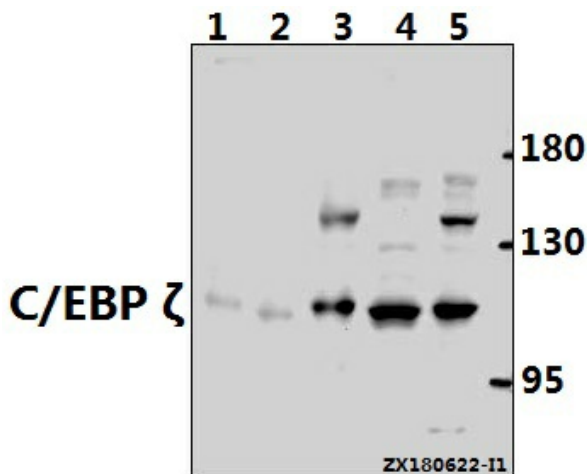


[View online »](#)

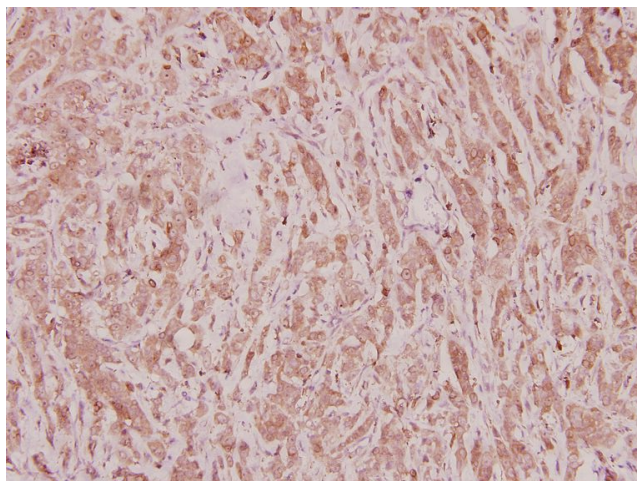
Synonyms: CBF; CBF2; CCAAT/enhancer binding protein zeta; CCAAT binding factor; CCAAT box binding transcription factor; Cebpz; HSPCBF

Note: For research use only, not for use in diagnostic procedure.

Product images:



Western blot (WB) analysis of C/EBP ζ (D24) pAb at 1:500 dilution Lane1:PC12 whole cell lysate(40ug) Lane2:3T3-L1 whole cell lysate(40ug) Lane3:A2780 whole cell lysate(40ug) Lane4:Hela whole cell lysate(40ug) Lane5:MCF-7 whole cell lysate(40ug)



Immunohistochemistry (IHC) analyzes of C/EBP ζ (D24) pAb in paraffin-embedded human breast carcinoma tissue at 1:100.