

## Product datasheet for **TA392780M**

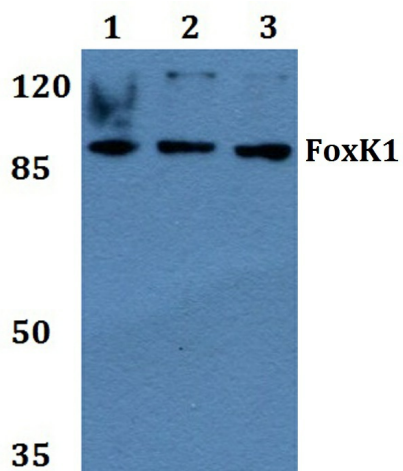
### FOXK1 Rabbit Polyclonal Antibody

#### Product data:

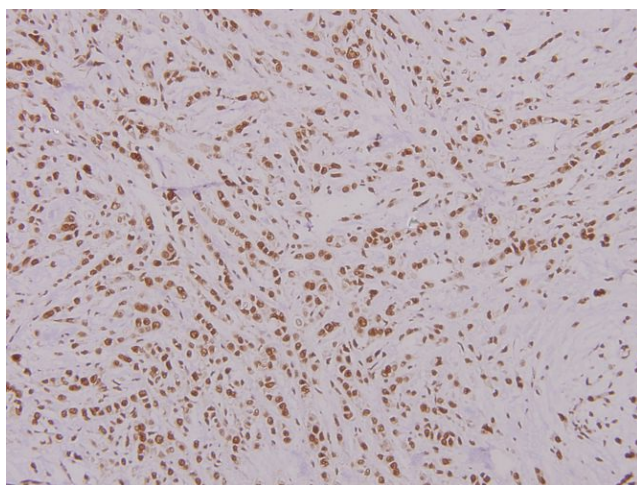
Product Type:	Primary Antibodies
Applications:	WB
Recommended Dilution:	WB: 1:500~1:1000 IHC: 1:50~1:200
Reactivity:	Human, Mouse, Rat
Host:	Rabbit
Isotype:	IgG
Clonality:	Polyclonal
Immunogen:	Synthetic peptide, corresponding to amino acids 668-720 of Human FoxK1.
Specificity:	FoxK1 (G698) polyclonal antibody detects endogenous levels of FoxK1 protein.
Formulation:	Rabbit IgG, 1mg/ml in PBS with 0.02% sodium azide, 50% glycerol, pH7.2
Concentration:	1mg/ml
Conjugation:	Unconjugated
Storage:	Store at 4°C short term. Aliquot and store at -20°C long term. Avoid freeze-thaw cycles.
Stability:	1 year
Predicted Protein Size:	~ 75, 97 kDa
Gene Name:	forkhead box K1
Database Link:	<a href="#">Entrez Gene 221937 Human P85037</a>
Background:	FOXK1 is expressed in these cells and regulates cell cycle progression through an interaction with its downstream target the cyclin-dependent kinase inhibitor p21 (CIP). Loss of FOXK1 in mice results in growth retardation and a severe impairment in skeletal muscle regeneration following injury. FOXK1 also shows expression in immature tissues of brain, eye, heart, lung and thymus. It also is predominantly expressed in many malignant tissues, such as tumors of the brain, colon and lymph node.
Synonyms:	FHX; Fork head; Forkhead box protein K1; FOXJ2 forkhead factor; FOXK1; MNF; Myocyte nuclear factor
Note:	For research use only, not for use in diagnostic procedure.



[View online »](#)

**Product images:**


Western blot (WB) analysis of FoxK1 (G698) pAb at 1:500 dilution Lane1:K562 whole cell lysate(40ug) Lane2:HCT116 whole cell lysate(40ug) Lane3:A549 whole cell lysate(40ug) Lane4:MCF-7 whole cell lysate(40ug) Lane5:CT26 whole cell lysate(40ug) Lane6:C6 whole cell lysate(40ug)



Immunohistochemistry (IHC) analysis of FoxK1 (G698) pAb in paraffin-embedded human breast carcinoma tissue at 1:100.