

Product datasheet for **TA392778S**

TIS11D (ZFP36L2) Rabbit Polyclonal Antibody

Product data:

Product Type:	Primary Antibodies
Applications:	WB
Recommended Dilution:	WB: 1:500~1:1000 IHC: 1:50~1:200
Reactivity:	Human, Mouse, Rat
Host:	Rabbit
Isotype:	IgG
Clonality:	Polyclonal
Immunogen:	Synthetic peptide, corresponding to amino acids 200-250 of Human TIS11D.
Specificity:	TIS11D (H243) polyclonal antibody detects endogenous levels of TIS11D protein.
Formulation:	Rabbit IgG, 1mg/ml in PBS with 0.02% sodium azide, 50% glycerol, pH7.2
Concentration:	1mg/ml
Conjugation:	Unconjugated
Storage:	Store at 4°C short term. Aliquot and store at -20°C long term. Avoid freeze-thaw cycles.
Stability:	1 year
Predicted Protein Size:	~ 40 kDa
Gene Name:	ZFP36 ring finger protein-like 2
Database Link:	Entrez Gene 678 Human P47974
Background:	TIS11D, also known as ZFP36LA (zinc finger protein 36, C3H type-like 2), BRF2 (butyrate response factor 2), ERF2 or RNF162C, is a 494 amino acid protein that localizes to the nucleus and contains two CSH1-type zinc fingers. Belonging to the TIS11 family of early response proteins, TIS11D is thought to function as a nuclear transcription factor that binds to 5'UUAUUUAUUU-3' core RNA sequences and may regulate growth factor-induced cellular responses. The gene encoding TIS11D maps to human chromosome 2, which houses over 1,400 genes and comprises nearly 8% of the human genome. Harlequin ichthyosis, a rare and morbid skin deformity, is associated with mutations in the ABCA12 gene, while the lipid metabolic disorder sitosterolemia is associated with defects in the ABCG5 and ABCG8 genes.

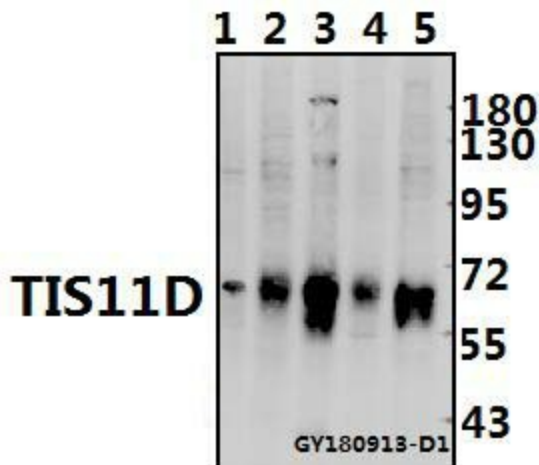


[View online »](#)

Synonyms: BRF2; Butyrate response factor 2; EGF-response factor 2; ERF-2; ERF2; Protein TIS11D; RNF162C; TIS11D; ZFP36-like 2; ZFP36L2; Zinc finger protein 36, C3H1 type-like 2

Note: For research use only, not for use in diagnostic procedure.

Product images:



Western blot (WB) analysis of TIS11D (H243) polyclonal antibody at 1:500 dilution Lane1:PC12 whole cell lysate(40ug) Lane2:HCT116 whole cell lysate(40ug) Lane3:CT26 whole cell lysate(40ug) Lane4:A375 whole cell lysate(40ug) Lane5:Myla2059 whole cell lysate(40ug)