

## Product datasheet for **TA392775M**

### Calreticulin (CALR) Rabbit Polyclonal Antibody

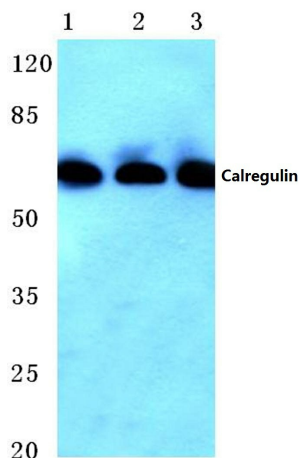
#### Product data:

Product Type:	Primary Antibodies
Applications:	WB
Recommended Dilution:	WB: 1:500~1:1000 IHC: 1:50~1:200
Reactivity:	Human, Mouse, Rat
Host:	Rabbit
Isotype:	IgG
Clonality:	Polyclonal
Immunogen:	Synthetic peptide, corresponding to amino acids 20-70 of Human Calregulin.
Specificity:	Calregulin (G54) polyclonal antibody detects endogenous levels of Calregulin protein
Formulation:	Rabbit IgG, 1mg/ml in PBS with 0.02% sodium azide, 50% glycerol, pH7.2
Concentration:	1mg/ml
Conjugation:	Unconjugated
Storage:	Store at 4°C short term. Aliquot and store at -20°C long term. Avoid freeze-thaw cycles.
Stability:	1 year
Predicted Protein Size:	~ 60 kDa
Gene Name:	calreticulin
Database Link:	<a href="#">Entrez Gene 811 Human P27797</a>
Background:	Calcium-binding chaperone that promotes folding, oligomeric assembly and quality control in the endoplasmic reticulum (ER) via the calreticulin/calnexin cycle. This lectin interacts transiently with almost all of the monoglucosylated glycoproteins that are synthesized in the ER. Interacts with the DNA-binding domain of NR3C1 and mediates its nuclear export. Involved in maternal gene expression regulation. May participate in oocyte maturation via the regulation of calcium homeostasis
Synonyms:	CALR; Calregulin; Calreticulin; CRP55; CRTC; Endoplasmic reticulum resident protein 60; ERp60; grp60; HACBP
Note:	For research use only, not for use in diagnostic procedure.

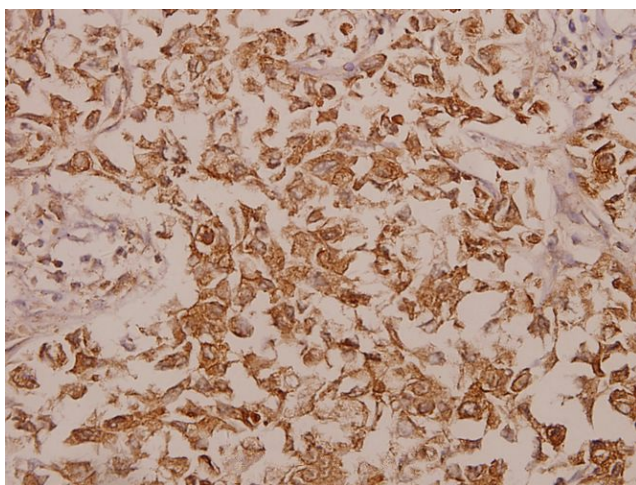


[View online »](#)

## Product images:



Western blot (WB) analysis of Calregulin (G54) pAb at 1:500 dilution Lane1:L02 whole cell lysate(40ug) Lane2:MCF-7 whole cell lysate(40ug) Lane3:The Brain tissue lysate of Mouse(40ug) Lane4:The Brain tissue lysate of Rat(40ug)



Immunohistochemistry (IHC) analyzes of Calregulin (G54) pAb in paraffin-embedded human colorectal carcinoma tissue at 1:50.