

Product datasheet for **TA392774M**

CDK2 Rabbit Polyclonal Antibody

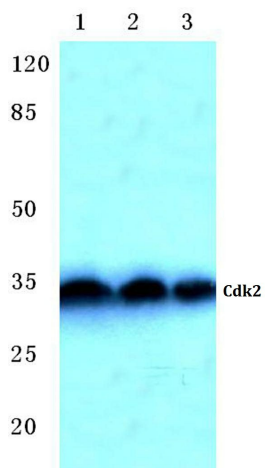
Product data:

| | |
|-------------------------|---|
| Product Type: | Primary Antibodies |
| Applications: | WB |
| Recommended Dilution: | WB: 1:500~1:1000 IHC: 1:50~1:200 |
| Reactivity: | Human, Mouse, Rat |
| Host: | Rabbit |
| Isotype: | IgG |
| Clonality: | Polyclonal |
| Immunogen: | Synthetic peptide, corresponding to amino acids 230-278 of Human Cdk2. |
| Specificity: | Cdk2 (Q265) polyclonal antibody detects endogenous levels of Cdk2 protein. |
| Formulation: | Rabbit IgG, 1mg/ml in PBS with 0.02% sodium azide, 50% glycerol, pH7.2 |
| Concentration: | 1mg/ml |
| Conjugation: | Unconjugated |
| Storage: | Store at 4°C short term. Aliquot and store at -20°C long term. Avoid freeze-thaw cycles. |
| Stability: | 1 year |
| Predicted Protein Size: | ~ 34 kDa |
| Gene Name: | cyclin-dependent kinase 2 |
| Database Link: | Entrez Gene 1017 Human P24941 |
| Background: | Cdk2 is a member of the Ser/Thr protein kinase family. It is highly similar to the gene products of <i>S. cerevisiae</i> cdc28, and <i>S. pombe</i> cdc2. It is a catalytic subunit of the cyclin-dependent protein kinase complex, whose activity is restricted to the G1-S phase, and is essential for cell cycle G1/S phase transition. This protein associates with and is regulated by the regulatory subunits of the complex including cyclin A or E, CDK inhibitor p21Cip1 (CDKN1A) and p27Kip1 (CDKN1B). Its activity is also regulated by protein phosphorylation. Two alternatively spliced variants and multiple transcription initiation sites of this gene have been reported. |
| Synonyms: | CDK2; CDKN2; Cell division protein kinase 2; Cyclin-dependent kinase 2; p33 protein kinase |

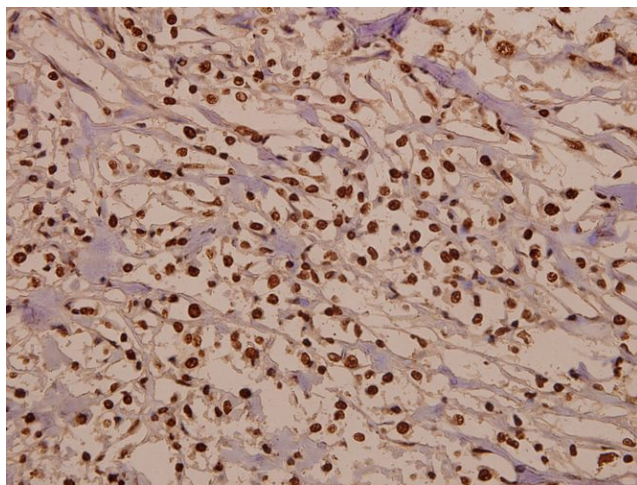

[View online »](#)

Note: For research use only, not for use in diagnostic procedure.

Product images:



Western blot (WB) analysis of Cdk2 (Q265) pAb at 1:500 dilution Lane1:K562 whole cell lysate(40ug) Lane2:HEK293T whole cell lysate(40ug) Lane3:H9C2 whole cell lysate(40ug) Lane4:MEF whole cell lysate(40ug)



Immunohistochemistry (IHC) analyzes of Cdk2 (Q265) pAb in paraffin-embedded human tonsil cancer tissue at 1:50.