

Product datasheet for **TA392773**

TPD52L2 Rabbit Polyclonal Antibody

Product data:

Product Type:	Primary Antibodies
Applications:	WB
Recommended Dilution:	WB: 1:500~1:1000
Reactivity:	Human, Mouse, Rat
Host:	Rabbit
Isotype:	IgG
Clonality:	Polyclonal
Immunogen:	Synthetic peptide, corresponding Human PRDX5.
Specificity:	TPD54 (K215) pAb detects endogenous levels of TPD54 (K215) protein.
Formulation:	Rabbit IgG, 1mg/ml in PBS with 0.02% sodium azide, 50% glycerol, pH7.2
Concentration:	1mg/ml
Conjugation:	Unconjugated
Storage:	Store at 4°C short term. Aliquot and store at -20°C long term. Avoid freeze-thaw cycles.
Stability:	1 year
Predicted Protein Size:	~ 22 kDa
Gene Name:	tumor protein D52 like 2
Database Link:	Entrez Gene 7165 Human O43399
Background:	<p>Tumor protein D52-like proteins (TPD52) are small coiled-coil motif bearing proteins that were first identified in breast carcinoma. Three human TPD52 members had been identified, named hD52 (TPD52), hD53 (TPD52L1), and hD54 (TPD52L2). The most important characteristic of the protein family is a highly conserved coiled-coil motif that is required for homo- and heteromeric interaction with other TPD52-like proteins. TPD52 and related proteins have been implicated in cell proliferation, apoptosis, and vesicle trafficking. TPD52L2 has five isoforms produced by alternative splicing, and its multiple sites have been identified to be phosphorylated. Interaction of TPD52L2 with MAL2, a novel member of the MAL proteolipid family, may be required for the role of TPD52L2 in vesicle transport.</p>

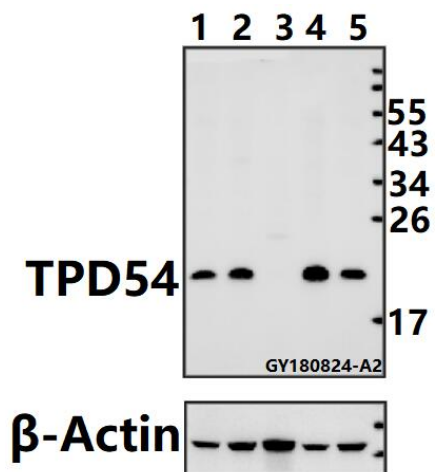


[View online »](#)

Synonyms: ACR1; Alu corepressor 1; Antioxidant enzyme B166; AOEB166; Liver tissue 2D-page spot 71B; Peroxiredoxin-5, mitochondrial; Peroxiredoxin V; Peroxisomal antioxidant enzyme; PLP; PRDX5; Prx-V; SBB110; Thioredoxin peroxidase PMP20; TPx type VI

Note: For research use only, not for use in diagnostic procedure.

Product images:



Western blot (WB) analysis of TPD54 (K215) pAb at 1:500 dilution Lane1:Hela whole cell lysate(40ug) Lane2:MCF-7 whole cell lysate(40ug) Lane3:The Spleen tissue lysate of Mouse(40ug) Lane4:PC12 whole cell lysate(40ug) Lane5:3T3-L1 whole cell lysate(40ug)