

## Product datasheet for **TA392771S**

### **RAD50 Rabbit Polyclonal Antibody**

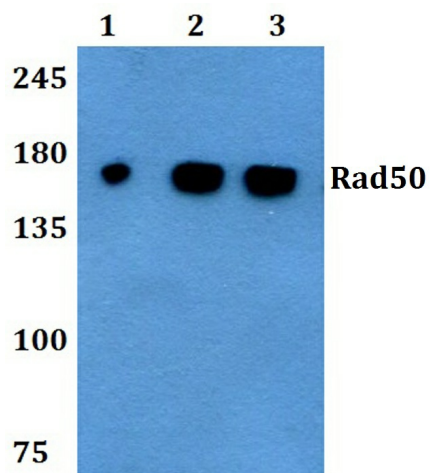
#### **Product data:**

Product Type:	Primary Antibodies
Applications:	WB
Recommended Dilution:	WB: 1:500~1:1000 IHC: 1:50~1:200
Reactivity:	Human, Mouse, Rat
Host:	Rabbit
Isotype:	IgG
Clonality:	Polyclonal
Immunogen:	Synthetic peptide, corresponding to amino acids 670-722 of Human Rad50.
Specificity:	Rad50 (A708) polyclonal antibody detects endogenous levels of Rad50 protein.
Formulation:	Rabbit IgG, 1mg/ml in PBS with 0.02% sodium azide, 50% glycerol, pH7.2
Concentration:	1mg/ml
Conjugation:	Unconjugated
Storage:	Store at 4°C short term. Aliquot and store at -20°C long term. Avoid freeze-thaw cycles.
Stability:	1 year
Predicted Protein Size:	~ 153 kDa
Gene Name:	RAD50 double strand break repair protein
Database Link:	<a href="#">Entrez Gene 10111 Human Q92878</a>
Background:	Rad52 family members (Rad50, Rad51B/C/D, Rad52, Rad54, MRE11) mediate DNA double-strand break repair (DSBR) for DNA damage that otherwise could cause cell death, mutation or neoplastic transformation. Rad51 (RECA, BRCC5) interacts with BRCA1 and BRCA2 to influence subcellular localization and cellular response to DNA damage. BRCA2 inactivation may be a key event leading to genomic instability and tumorigenesis from deregulation of Rad51. Rad52 forms a heptameric ring that binds single-stranded DNA ends and catalyzes DNA-DNA interaction necessary for the annealing of complementary strands.
Synonyms:	DNA repair protein RAD50; hRAD50; RAD50
Note:	For research use only, not for use in diagnostic procedure.



[View online »](#)

## Product images:



Western blot (WB) analysis of Rad50 (A708) polyclonal antibody at 1:500 dilution Lane1:786-O whole cell lysate(40ug) Lane2:U-87MG whole cell lysate(40ug) Lane3:SGC-7901 whole cell lysate(40ug) Lane4:SK-OVCAR3 whole cell lysate(40ug) Lane5:The Testis tissue lysate of Mouse(40ug) Lane6:The Testis tissue lysate of Rat(40ug) Lane7:C6 whole cell lysate(40ug)