

## Product datasheet for **TA392770M**

### CARD11 Rabbit Polyclonal Antibody

#### Product data:

Product Type:	Primary Antibodies
Applications:	WB
Recommended Dilution:	WB: 1:500~1:1000
Reactivity:	Human, Rat
Host:	Rabbit
Isotype:	IgG
Clonality:	Polyclonal
Immunogen:	Recombinant full length Human CARD11.
Specificity:	CARD11 polyclonal antibody detects endogenous levels of CARD11 protein.
Formulation:	Rabbit IgG, 1mg/ml in PBS with 0.02% sodium azide, 50% glycerol, pH7.2
Concentration:	1mg/ml
Conjugation:	Unconjugated
Storage:	Store at 4°C short term. Aliquot and store at -20°C long term. Avoid freeze-thaw cycles.
Stability:	1 year
Predicted Protein Size:	~ 133 kDa
Gene Name:	caspase recruitment domain family member 11
Database Link:	<a href="#">Entrez Gene 84433 Human Q9BXL7</a>

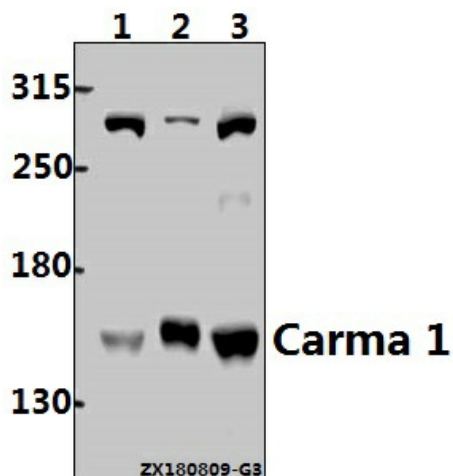
**Background:** The protein encoded by this gene belongs to the membrane-associated guanylate kinase (MAGUK) family, a class of proteins that functions as molecular scaffolds for the assembly of multiprotein complexes at specialized regions of the plasma membrane. This protein is also a member of the CARD protein family, which is defined by carrying a characteristic caspase-associated recruitment domain (CARD). This protein has a domain structure similar to that of CARD14 protein. The CARD domains of both proteins have been shown to specifically interact with BCL10, a protein known to function as a positive regulator of cell apoptosis and NF-kappaB activation. When expressed in cells, this protein activated NF-kappaB and induced the phosphorylation of BCL10.


[View online »](#)

**Synonyms:** CARD-containing MAGUK protein 1; CARD11; CARMA1; Carma 1; Caspase recruitment domain-containing protein 11

**Note:** For research use only, not for use in diagnostic procedure.

**Product images:**



Western blot (WB) analysis of Carma 1 (M12) pAb at 1:500 dilution Lane1:K562 whole cell lysate(40ug) Lane2:The Thymus tissue lysate of Rat(30ug) Lane3:Myla2059 whole cell lysate(40ug)